

Datasheet for ABIN2785492  
**anti-HSPA1L antibody (C-Term)**



[Go to Product page](#)

2 Images

## Overview

Quantity:	100 µL
Target:	HSPA1L
Binding Specificity:	C-Term
Reactivity:	Human, Rat, Mouse, Pig, Cow, Dog, Goat, Horse
Host:	Rabbit
Clonality:	Polyclonal
Conjugate:	This HSPA1L antibody is un-conjugated
Application:	Western Blotting (WB)

## Product Details

Immunogen:	The immunogen is a synthetic peptide directed towards the C terminal region of human HSPA1L
Sequence:	DEFDHKRKEL EQMCNPIITK LYQGGCTGPA CGTGYVPGRP ATGPTIEEVD
Predicted Reactivity:	Cow: 86%, Dog: 86%, Goat: 86%, Horse: 86%, Human: 100%, Mouse: 86%, Pig: 86%, Rat: 86%
Characteristics:	This is a rabbit polyclonal antibody against HSPA1L. It was validated on Western Blot using a cell lysate as a positive control.
Purification:	Affinity Purified

## Target Details

Target:	HSPA1L
---------	--------

## Target Details

Alternative Name:	HSPA1L ( <a href="#">HSPA1L Products</a> )
Background:	<p>HSPA1L is a 70 kDa heat shock protein. In conjunction with other heat shock proteins, this protein stabilizes existing proteins against aggregation and mediates the folding of newly translated proteins in the cytosol and in organelles. This gene encodes a 70 kDa heat shock protein. In conjunction with other heat shock proteins, this protein stabilizes existing proteins against aggregation and mediates the folding of newly translated proteins in the cytosol and in organelles. The gene is located in the major histocompatibility complex class III region, in a cluster with two closely related genes which also encode isoforms of the 70 kDa heat shock protein. Publication Note: This RefSeq record includes a subset of the publications that are available for this gene. Please see the Entrez Gene record to access additional publications.</p> <p>Alias Symbols: HSP70-HOM, hum70t, HSP70T, HSP70-1L</p> <p>Protein Interaction Partner: TUBG1, TP53, CDC20, AIRE, NEDD1, CEP250, CEP57, STUB1, BAG4, DNAJC7, STAU1, UBC, ZBTB1, TRIM25, XPO1, RAP1GDS1, NUCB2, HSPA5, GAPDH, CLU, CAMK1D, UBQLN1, IPO7, PARK2, BAG3, HDAC6, K5, METTL21C, DCP1B, METTL21A, CFTR, METTL22, DCP1A, METTL21B, UBL4A, TRAF3</p> <p>Protein Size: 641</p>
Molecular Weight:	70 kDa
Gene ID:	3305
NCBI Accession:	<a href="#">NM_005527</a> , <a href="#">NP_005518</a>
UniProt:	<a href="#">P34931</a>

## Application Details

Application Notes:	Optimal working dilutions should be determined experimentally by the investigator.
Comment:	Antigen size: 641 AA
Restrictions:	For Research Use only

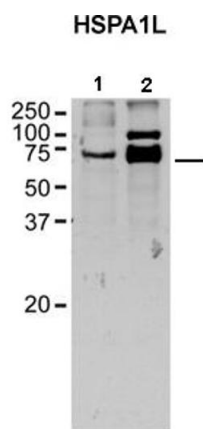
## Handling

Format:	Liquid
Concentration:	Lot specific
Buffer:	Liquid. Purified antibody supplied in 1x PBS buffer with 0.09 % (w/v) sodium azide and 2 % sucrose.

Handling

Preservative:	Sodium azide
Precaution of Use:	This product contains Sodium azide: a POISONOUS AND HAZARDOUS SUBSTANCE which should be handled by trained staff only.
Handling Advice:	Avoid repeated freeze-thaw cycles.
Storage:	-20 °C
Storage Comment:	For short term use, store at 2-8°C up to 1 week. For long term storage, store at -20°C in small aliquots to prevent freeze-thaw cycles.

Images



See Immunoblot 2 Data for more information.



Western Blotting

**Image 1. Sample Type:** 1. Lamprey CNS (20ug)  
2. Rat Brain Lysate (20ug)  
**Primary Dilution:** 1:1000  
**Secondary Antibody:** Goat anti-Rabbit HRP  
**Secondary Dilution:** 1:4000  
**Image Submitted by:** Jennifer Morgan, PhD &, David Busch  
University of Texas in Austin

Western Blotting

**Image 2. WB Suggested Anti-HSPA1L Antibody Titration:**  
0.2-1 ug/ml  
**Positive Control:** Jurkat cell lysate