

Datasheet for ABIN2785494  
**anti-Calicin antibody (N-Term)**[Go to Product page](#)

## 2 Images

## Overview

Quantity:	100 µL
Target:	Calicin (CCIN)
Binding Specificity:	N-Term
Reactivity:	Human, Mouse, Rat, Cow, Rabbit, Dog, Guinea Pig, Horse
Host:	Rabbit
Clonality:	Polyclonal
Conjugate:	This Calicin antibody is un-conjugated
Application:	Western Blotting (WB)

## Product Details

Immunogen:	The immunogen is a synthetic peptide directed towards the N terminal region of human CCIN
Sequence:	VAYSGIRDNF HYWASPEGSM HFMRCPPVIF GRLLRDENLH VLNEDQALSA
Predicted Reactivity:	Cow: 100%, Dog: 100%, Guinea Pig: 100%, Horse: 93%, Human: 100%, Mouse: 100%, Rabbit: 100%, Rat: 100%
Characteristics:	This is a rabbit polyclonal antibody against CCIN. It was validated on Western Blot.
Purification:	Affinity Purified

## Target Details

Target:	Calicin (CCIN)
Alternative Name:	CCIN ( <a href="#">CCIN Products</a> )

## Target Details

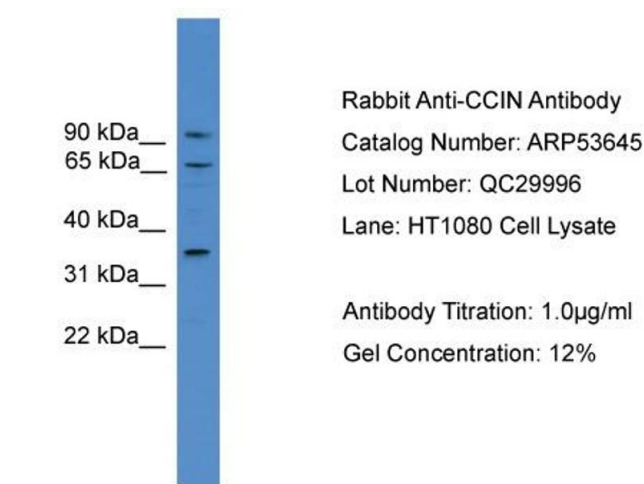
Background:	CCIN is a basic protein of the sperm head cytoskeleton. This protein contains kelch repeats and a BTB/POZ domain and is necessary for normal morphology during sperm differentiation. Alias Symbols: - Protein Interaction Partner: APP, CCIN, ACTA1, Protein Size: 588
Molecular Weight:	65 kDa
Gene ID:	881
NCBI Accession:	<a href="#">NM_005893</a> , <a href="#">NP_005884</a>
UniProt:	<a href="#">Q13939</a>

## Application Details

Application Notes:	Optimal working dilutions should be determined experimentally by the investigator.
Comment:	Antigen size: 588 AA
Restrictions:	For Research Use only

## Handling

Format:	Liquid
Concentration:	Lot specific
Buffer:	Liquid. Purified antibody supplied in 1x PBS buffer with 0.09 % (w/v) sodium azide and 2 % sucrose.
Preservative:	Sodium azide
Precaution of Use:	This product contains Sodium azide: a POISONOUS AND HAZARDOUS SUBSTANCE which should be handled by trained staff only.
Handling Advice:	Avoid repeated freeze-thaw cycles.
Storage:	-20 °C
Storage Comment:	For short term use, store at 2-8°C up to 1 week. For long term storage, store at -20°C in small aliquots to prevent freeze-thaw cycles.



#### Western Blotting

**Image 1.** WB Suggested Anti-CCIN

Antibody Titration: 0.2-1 µg/mL ELISA Titer: 1:1562500

Positive Control: HT1080 cell lysate

#### Western Blotting

**Image 2. WB Suggested Anti-CCIN Antibody Titration:** 0.2-1 ug/ml

**ELISA Titer:** 1:1562500

**Positive Control:** HT1080 cell lysate

