

Datasheet for ABIN2785496
anti-NBR1 antibody (C-Term)[Go to Product page](#)

2 Images

Overview

Quantity:	100 µL
Target:	NBR1
Binding Specificity:	C-Term
Reactivity:	Human, Mouse, Rat, Cow, Dog, Horse, Pig, Rabbit
Host:	Rabbit
Clonality:	Polyclonal
Conjugate:	This NBR1 antibody is un-conjugated
Application:	Western Blotting (WB)

Product Details

Immunogen:	The immunogen is a synthetic peptide corresponding to a region of Mouse
Sequence:	PGLERGAEGE PGIESGLEPT EARERLPERE SQPQEQSISD ILTTSQPLDT
Predicted Reactivity:	Cow: 86%, Dog: 86%, Horse: 86%, Human: 100%, Mouse: 86%, Pig: 93%, Rabbit: 86%, Rat: 86%
Characteristics:	This is a rabbit polyclonal antibody against Nbr1. It was validated on Western Blot.
Purification:	Affinity Purified

Target Details

Target:	NBR1
Alternative Name:	Nbr1 (NBR1 Products)
Background:	Nbr1 acts probably as a receptor for selective autophagosomal degradation of ubiquitinated

Target Details

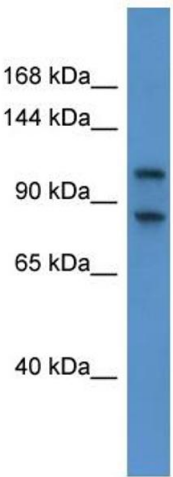
	targets Alias Symbols: mKIAA0049 Protein Interaction Partner: GSK3B, GSK3A, Ube2o, Lamtor2, Tmed10, Ubc, Ubb, Map1b, Mapk14, Sqstm1, Protein Size: 988
Molecular Weight:	109 kDa
Gene ID:	17966
NCBI Accession:	NM_008676 , NP_032702
UniProt:	P97432
Pathways:	Autophagy

Application Details

Application Notes:	Optimal working dilutions should be determined experimentally by the investigator.
Comment:	Antigen size: 988 AA
Restrictions:	For Research Use only

Handling

Format:	Liquid
Concentration:	Lot specific
Buffer:	Liquid. Purified antibody supplied in 1x PBS buffer with 0.09 % (w/v) sodium azide and 2 % sucrose.
Preservative:	Sodium azide
Precaution of Use:	This product contains Sodium azide: a POISONOUS AND HAZARDOUS SUBSTANCE which should be handled by trained staff only.
Handling Advice:	Avoid repeated freeze-thaw cycles.
Storage:	-20 °C
Storage Comment:	For short term use, store at 2-8°C up to 1 week. For long term storage, store at -20°C in small aliquots to prevent freeze-thaw cycles.

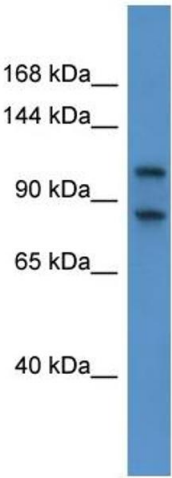


Western Blotting

Image 1. WB Suggested Anti-Nbr1 Antibody Titration: 0.2-1 ug/ml

ELISA Titer: 1:1562500

Positive Control: Mouse Spleen



Rabbit Anti-Nbr1 Antibody
Catalog Number: ARP53647
Lot Number: QC21920
Lane: Mouse Spleen Lysate

Antibody Titration: 1.0 µg/ml
Gel Concentration: 6-18%

Western Blotting

Image 2. WB Suggested Anti-Nbr1

Antibody Titration: 0.2-1 µg/mL ELISA Titer: 1:1562500

Positive Control: Mouse Spleen