

Datasheet for ABIN2785508  
**anti-PRSS21 antibody (N-Term)**[Go to Product page](#)

## 2 Images

## Overview

|                      |                                       |
|----------------------|---------------------------------------|
| Quantity:            | 100 µL                                |
| Target:              | PRSS21                                |
| Binding Specificity: | N-Term                                |
| Reactivity:          | Human, Mouse, Guinea Pig, Rabbit, Rat |
| Host:                | Rabbit                                |
| Clonality:           | Polyclonal                            |
| Conjugate:           | This PRSS21 antibody is un-conjugated |
| Application:         | Western Blotting (WB)                 |

## Product Details

|                       |   |
|-----------------------|---|
| Immunogen:            | The immunogen is a synthetic peptide directed towards the N terminal region of human PRSS21 |
| Sequence:             | RRVITSRIVG GEDAELGRWP WQGSRLWDS HVCGVSLLSH RWALTAAHCF                                       |
| Predicted Reactivity: | Guinea Pig: 83%, Human: 100%, Mouse: 92%, Rabbit: 92%, Rat: 92%                             |
| Characteristics:      | This is a rabbit polyclonal antibody against PRSS21. It was validated on Western Blot.      |
| Purification:         | Affinity Purified   |

## Target Details

|                   |  |
|-------------------|--|
| Target:           | PRSS21                                     |
| Alternative Name: | PRSS21 ( <a href="#">PRSS21 Products</a> ) |

## Target Details

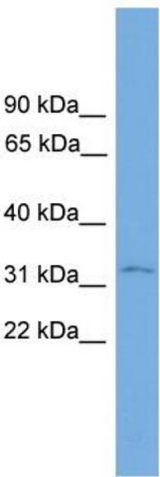
|                   |  |
|-------------------|--|
| Background:       | <p>This gene encodes a cell-surface anchored serine protease, which is a member of the trypsin family of serine proteases. It is predicted to be active on peptide linkages involving the carboxyl group of lysine or arginine. The protein localizes to the cytoplasm and the plasma membrane of premeiotic testicular germ cells and it may be involved in progression of testicular tumors of germ cell origin. Alternative splicing of this gene results in three transcript variants encoding three different isoforms.</p> <p>Alias Symbols: ESP-1, ESP1, TEST1, TESTISIN</p> <p>Protein Interaction Partner: FBXO6, UBC,</p> <p>Protein Size: 300</p> |
| Molecular Weight: | 33 kDa   |
| Gene ID:          | 10942  |
| NCBI Accession:   | <a href="#">NM_144957</a> , <a href="#">NP_659206</a>  |

## Application Details

|                    |  |
|--------------------|--|
| Application Notes: | Optimal working dilutions should be determined experimentally by the investigator. |
| Comment:           | Antigen size: 300 AA   |
| Restrictions:      | For Research Use only  |

## Handling

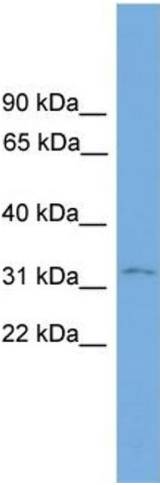
|                    |   |
|--------------------|---|
| Format:            | Liquid  |
| Concentration:     | Lot specific  |
| Buffer:            | Liquid. Purified antibody supplied in 1x PBS buffer with 0.09 % (w/v) sodium azide and 2 % sucrose.                                     |
| Preservative:      | Sodium azide  |
| Precaution of Use: | This product contains Sodium azide: a POISONOUS AND HAZARDOUS SUBSTANCE which should be handled by trained staff only.                  |
| Handling Advice:   | Avoid repeated freeze-thaw cycles.  |
| Storage:           | -20 °C  |
| Storage Comment:   | For short term use, store at 2-8°C up to 1 week. For long term storage, store at -20°C in small aliquots to prevent freeze-thaw cycles. |



**Western Blotting**

**Image 1. WB Suggested Anti-PRSS21 Antibody Titration:**  
0.2-1 ug/ml

**Positive Control:** Human brain



**Rabbit Anti-PRSS21 Antibody**  
Catalog Number: ARP53665  
Lot Number: QC29204  
Lane: Fetal Brain Lysate

Antibody Titration: 1.0µg/ml  
Gel Concentration: 12%

**Western Blotting**

**Image 2. WB Suggested Anti-PRSS21**  
Antibody Titration: 0.2-1 µg/mL  
Positive Control: Human brain