

Datasheet for ABIN2785513 anti-SPAG6 antibody (Middle Region)



[Go to Product page](#)

1 Image

1 Publication

Overview

Quantity:	100 µL
Target:	SPAG6
Binding Specificity:	Middle Region
Reactivity:	Human, Mouse, Rat, Pig, Rabbit, Cow, Dog, Horse, Zebrafish (Danio rerio), Guinea Pig
Host:	Rabbit
Clonality:	Polyclonal
Conjugate:	This SPAG6 antibody is un-conjugated
Application:	Western Blotting (WB)

Product Details

Immunogen:	The immunogen is a synthetic peptide directed towards the middle region of human SPAG6
Sequence:	HVVGQFSKVL PHDSKARRLF VTSGGLKKVQ EIKAEPGSLQ QEYINSINSC
Predicted Reactivity:	Cow: 100%, Dog: 100%, Guinea Pig: 93%, Horse: 100%, Human: 100%, Mouse: 100%, Pig: 100%, Rabbit: 100%, Rat: 100%, Zebrafish: 100%
Characteristics:	This is a rabbit polyclonal antibody against SPAG6. It was validated on Western Blot using a cell lysate as a positive control.
Purification:	Affinity Purified

Target Details

Target:	SPAG6
---------	-------

Target Details

Alternative Name:	SPAG6 (SPAG6 Products)
Background:	<p>SPAG6 is important for structural integrity of the central apparatus in the sperm tail and for flagellar motility. The correlation of anti-sperm antibodies with cases of unexplained infertility implicates a role for these antibodies in blocking fertilization. Improved diagnosis and treatment of immunologic infertility, as well as identification of proteins for targeted contraception, are dependent on the identification and characterization of relevant sperm antigens. The protein expressed by this gene is recognized by anti-sperm antibodies from an infertile man. This protein localizes to the tail of permeabilized human sperm and contains eight contiguous armadillo repeats, a motif known to mediate protein-protein interactions. Studies in mice suggest that this protein is involved in sperm flagellar motility and maintenance of the structural integrity of mature sperm. Alternatively spliced variants that encode different protein isoforms have been described but the full-length sequences of only two have been determined.</p> <p>Alias Symbols: DKFZp434I153, MGC26276, Repro-SA-1, pf16</p> <p>Protein Interaction Partner: APP, SPAG16,</p> <p>Protein Size: 509</p>
Molecular Weight:	56 kDa
Gene ID:	9576
NCBI Accession:	NM_012443 , NP_036575
UniProt:	O75602

Application Details

Application Notes:	Optimal working dilutions should be determined experimentally by the investigator.
Comment:	Antigen size: 509 AA
Restrictions:	For Research Use only

Handling

Format:	Liquid
Concentration:	Lot specific
Buffer:	Liquid. Purified antibody supplied in 1x PBS buffer with 0.09 % (w/v) sodium azide and 2 % sucrose.
Preservative:	Sodium azide

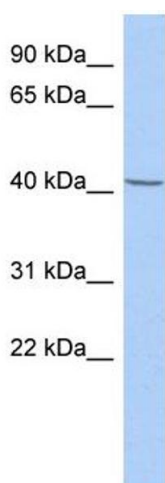
Handling

Precaution of Use:	This product contains Sodium azide: a POISONOUS AND HAZARDOUS SUBSTANCE which should be handled by trained staff only.
Handling Advice:	Avoid repeated freeze-thaw cycles.
Storage:	-20 °C
Storage Comment:	For short term use, store at 2-8°C up to 1 week. For long term storage, store at -20°C in small aliquots to prevent freeze-thaw cycles.

Publications

Product cited in:	Ueda, Nagae, Kozawa, Morishita, Kimura, Nagase, Ohara, Yoshida, Asano: "Heterotrimeric G protein betagamma subunits stimulate FLJ00018, a guanine nucleotide exchange factor for Rac1 and Cdc42." in: The Journal of biological chemistry , Vol. 283, Issue 4, pp. 1946-53, (2008) (PubMed).
-------------------	---

Images



Western Blotting

Image 1. WB Suggested Anti-SPAG6 Antibody Titration:

0.2-1 ug/ml

ELISA Titer: 1:1562500

Positive Control: HT1080 cell lysate