

Datasheet for ABIN2785516
anti-LRRC6 antibody (N-Term)[Go to Product page](#)

1 Image

1 Publication

Overview

Quantity:	100 µL
Target:	LRRC6
Binding Specificity:	N-Term
Reactivity:	Human, Mouse, Horse, Rabbit, Dog, Rat, Cow, Guinea Pig
Host:	Rabbit
Clonality:	Polyclonal
Conjugate:	This LRRC6 antibody is un-conjugated
Application:	Western Blotting (WB)

Product Details

Immunogen:	The immunogen is a synthetic peptide directed towards the N terminal region of human LRRC6
Sequence:	LNALNINIEK IENLEGCEEL AKLDLTVNFI GELSSIKNLQ HNIHLKELFL
Predicted Reactivity:	Cow: 79%, Dog: 93%, Guinea Pig: 86%, Horse: 86%, Human: 100%, Mouse: 79%, Rabbit: 79%, Rat: 79%
Characteristics:	This is a rabbit polyclonal antibody against LRRC6. It was validated on Western Blot using a cell lysate as a positive control.
Purification:	Affinity Purified

Target Details

Target:	LRRC6
---------	-------

Target Details

Alternative Name:	LRRC6 (LRRC6 Products)
Background:	LRRC6 may be involved in spermatocytogenesis or prophase of meiosis. Alias Symbols: LRTP, TSLRP Protein Interaction Partner: SCRIB, Protein Size: 466
Molecular Weight:	51 kDa
Gene ID:	23639
NCBI Accession:	NM_012472 , NP_036604
UniProt:	Q86X45
Pathways:	M Phase

Application Details

Application Notes:	Optimal working dilutions should be determined experimentally by the investigator.
Comment:	Antigen size: 466 AA
Restrictions:	For Research Use only

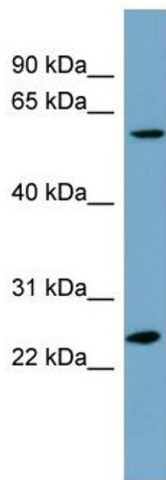
Handling

Format:	Liquid
Concentration:	Lot specific
Buffer:	Liquid. Purified antibody supplied in 1x PBS buffer with 0.09 % (w/v) sodium azide and 2 % sucrose.
Preservative:	Sodium azide
Precaution of Use:	This product contains Sodium azide: a POISONOUS AND HAZARDOUS SUBSTANCE which should be handled by trained staff only.
Handling Advice:	Avoid repeated freeze-thaw cycles.
Storage:	-20 °C
Storage Comment:	For short term use, store at 2-8°C up to 1 week. For long term storage, store at -20°C in small aliquots to prevent freeze-thaw cycles.

Publications

Product cited in: Ewing, Chu, Elisma, Li, Taylor, Climie, McBroom-Cerajewski, Robinson, OConnor, Li, Taylor, Dharsee, Ho, Heilbut, Moore, Zhang, Ornatsky, Bukhman, Ethier, Sheng, Vasilescu, Abu-Farha, Lambert, Duewel et al.: "Large-scale mapping of human protein-protein interactions by mass spectrometry. ..." in: **Molecular systems biology**, Vol. 3, pp. 89, (2007) ([PubMed](#)).

Images



Western Blotting

Image 1. WB Suggested Anti-LRRC6 Antibody Titration:
0.2-1 ug/ml
ELISA Titer: 1:312500
Positive Control: PANC1 cell lysate