

Datasheet for ABIN2785517  
**anti-SSX2IP antibody (Middle Region)**[Go to Product page](#)

## 1 Image

## Overview

Quantity:	100 µL
Target:	SSX2IP
Binding Specificity:	Middle Region
Reactivity:	Human, Rat, Mouse, Dog, Cow, Guinea Pig, Horse, Rabbit
Host:	Rabbit
Clonality:	Polyclonal
Conjugate:	This SSX2IP antibody is un-conjugated
Application:	Western Blotting (WB), Immunohistochemistry (IHC)

## Product Details

Immunogen:	The immunogen is a synthetic peptide directed towards the middle region of human SSX2IP
Sequence:	KVHLEGFNDE DVISRQDHEQ ETEKLELEIQ QCKEMIKTQQ QLLQQQLATA
Predicted Reactivity:	Cow: 100%, Dog: 100%, Guinea Pig: 100%, Horse: 100%, Human: 100%, Mouse: 93%, Rabbit: 100%, Rat: 100%
Characteristics:	This is a rabbit polyclonal antibody against SSX2IP. It was validated on Western Blot using a cell lysate as a positive control.
Purification:	Affinity Purified

## Target Details

Target:	SSX2IP
---------	--------

## Target Details

Alternative Name:	SSX2IP ( <a href="#">SSX2IP Products</a> )
Background:	<p>SSX2IP belongs to an adhesion system, which plays a role in the organization of homotypic, interneuronal and heterotypic cell-cell adherens junctions (AJs). It may connect the nectin-afadin and E-cadherin-catenin system through alpha-actinin and may be involved in organization of the actin cytoskeleton at AJs through afadin and alpha-actinin.</p> <p>Alias Symbols: ADIP, FLJ10848, KIAA0923, MGC75026</p> <p>Protein Interaction Partner: CDC23, EIF4A2, EHHADH, PHC2, DAXX, CCNH, BYSL, XIAP, NAA10, ZRSR2, ZNF124, ZNF3, TP53BP2, TEAD4, TBP, SSX2, PSMA1, PKN1, PRKAA1, DRG1, TRIM37, MOS, MFAP1, LM02, KRT31, KRT15, GEM, GOLGA8F, KRTAP10-7, TRIM42, ZMAT2, ZNF417, ZNF792, KRT40, FRMD6, MORN4, SSX</p> <p>Protein Size: 614</p>
Molecular Weight:	68 kDa
Gene ID:	117178
NCBI Accession:	<a href="#">NM_014021</a> , <a href="#">NP_054740</a>
UniProt:	<a href="#">Q9Y2D8</a>

## Application Details

Application Notes:	Optimal working dilutions should be determined experimentally by the investigator.
Comment:	Antigen size: 614 AA
Restrictions:	For Research Use only

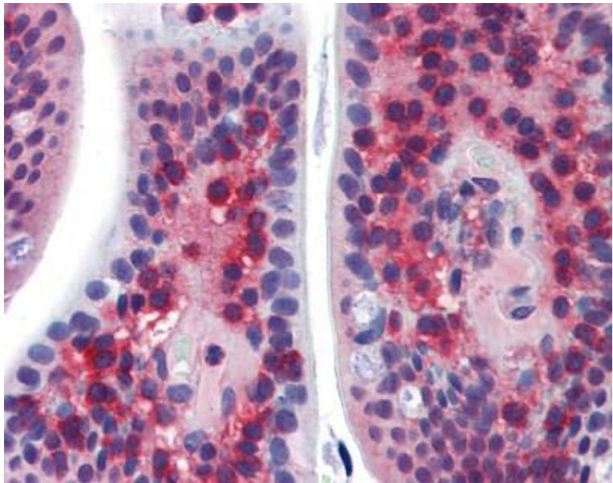
## Handling

Format:	Liquid
Concentration:	Lot specific
Buffer:	Liquid. Purified antibody supplied in 1x PBS buffer with 0.09 % (w/v) sodium azide and 2 % sucrose.
Preservative:	Sodium azide
Precaution of Use:	This product contains Sodium azide: a POISONOUS AND HAZARDOUS SUBSTANCE which should be handled by trained staff only.
Handling Advice:	Avoid repeated freeze-thaw cycles.

Handling

Storage:	-20 °C
Storage Comment:	For short term use, store at 2-8°C up to 1 week. For long term storage, store at -20°C in small aliquots to prevent freeze-thaw cycles.

Images



Immunohistochemistry

Image 1.