

Datasheet for ABIN2785518
anti-HSPA4L antibody (Middle Region)[Go to Product page](#)[1 Image](#)[1 Publication](#)

Overview

Quantity:	100 µL
Target:	HSPA4L
Binding Specificity:	Middle Region
Reactivity:	Human, Mouse, Dog, Rat, Horse, Pig
Host:	Rabbit
Clonality:	Polyclonal
Conjugate:	This HSPA4L antibody is un-conjugated
Application:	Western Blotting (WB)

Product Details

Immunogen:	The immunogen is a synthetic peptide directed towards the middle region of human HSPA4L
Sequence:	KCHAEHTPEE EIDHTGAKTK SAVSDKQDRL NQTLKKGKVK SIDLPIQSSL
Predicted Reactivity:	Dog: 93%, Horse: 93%, Human: 100%, Mouse: 90%, Pig: 79%, Rat: 90%
Characteristics:	This is a rabbit polyclonal antibody against HSPA4L. It was validated on Western Blot using a cell lysate as a positive control.
Purification:	Affinity Purified

Target Details

Target:	HSPA4L
Alternative Name:	HSPA4L (HSPA4L Products)

Target Details

Background: HSPA4L possesses chaperone activity in vitro where it inhibits aggregation of citrate synthase.
Alias Symbols: APG-1, Osp94, HSPH3
Protein Interaction Partner: SUMO2, STUB1, TTC1, SGTA, HSPA8, HSF1, UBC, IPO7, SEC23A, RANBP3, STAT1, PPP2R2A, GARS, APEH, PUS7, LUC7L2, METTL21A, PAXIP1, DIAPH1, NUP188, NUBP2, VPS26A, TERF2, PHLDA1, TUSC2, TCEAL1, DOK2, USF2, KRT8,
Protein Size: 839

Molecular Weight: 92 kDa

Gene ID: 22824

NCBI Accession: [NM_014278](#), [NP_055093](#)

UniProt: [O95757](#)

Application Details

Application Notes: Optimal working dilutions should be determined experimentally by the investigator.

Comment: Antigen size: 839 AA

Restrictions: For Research Use only

Handling

Format: Liquid

Concentration: Lot specific

Buffer: Liquid. Purified antibody supplied in 1x PBS buffer with 0.09 % (w/v) sodium azide and 2 % sucrose.

Preservative: Sodium azide

Precaution of Use: This product contains Sodium azide: a POISONOUS AND HAZARDOUS SUBSTANCE which should be handled by trained staff only.

Handling Advice: Avoid repeated freeze-thaw cycles.

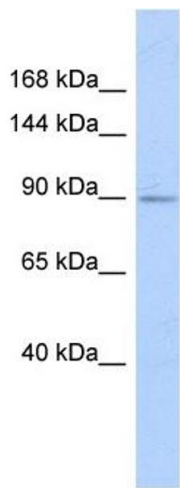
Storage: -20 °C

Storage Comment: For short term use, store at 2-8°C up to 1 week. For long term storage, store at -20°C in small aliquots to prevent freeze-thaw cycles.

Publications

Product cited in: Ewing, Chu, Elisma, Li, Taylor, Climie, McBroom-Cerajewski, Robinson, OConnor, Li, Taylor, Dharsee, Ho, Heilbut, Moore, Zhang, Ornatsky, Bukhman, Ethier, Sheng, Vasilescu, Abu-Farha, Lambert, Duewel et al.: "Large-scale mapping of human protein-protein interactions by mass spectrometry. ..." in: **Molecular systems biology**, Vol. 3, pp. 89, (2007) ([PubMed](#)).

Images



Western Blotting

Image 1. WB Suggested Anti-HSPA4L Antibody Titration:
0.2-1 ug/ml
ELISA Titer: 1:1562500
Positive Control: COLO205 cell lysate