

Datasheet for ABIN2785530  
**anti-SCCPDH antibody (C-Term)**[Go to Product page](#)

## 1 Image

## Overview

Quantity:	100 µL
Target:	SCCPDH
Binding Specificity:	C-Term
Reactivity:	Human, Rat, Guinea Pig, Horse, Dog
Host:	Rabbit
Clonality:	Polyclonal
Conjugate:	This SCCPDH antibody is un-conjugated
Application:	Western Blotting (WB)

## Product Details

Immunogen:	The immunogen is a synthetic peptide directed towards the C terminal region of human SCCPDH
Sequence:	FSFGYFSKQG PTQKQIDAAS FTLTFFGQGY SQGTGTDKNK PNIKICTQVK
Predicted Reactivity:	Dog: 79%, Guinea Pig: 79%, Horse: 86%, Human: 100%, Rat: 79%
Characteristics:	This is a rabbit polyclonal antibody against SCCPDH. It was validated on Western Blot using a cell lysate as a positive control.
Purification:	Affinity Purified

## Target Details

Target:	SCCPDH
---------	--------

## Target Details

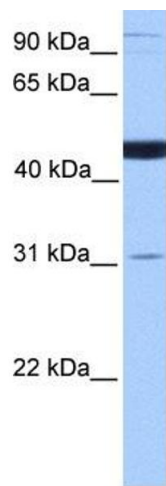
Alternative Name:	SCCPDH ( <a href="#">SCCPDH Products</a> )
Background:	<p>SCCPDH belongs to the saccharopine dehydrogenase family. The exact function of SCCPDH remains unknown.</p> <p>Alias Symbols: CGI-49, FLJ43187, RP11-439E19.2, NET11</p> <p>Protein Interaction Partner: UBC, PAXIP1,</p> <p>Protein Size: 429</p>
Molecular Weight:	47 kDa
Gene ID:	51097
NCBI Accession:	<a href="#">NM_016002</a> , <a href="#">NP_057086</a>
UniProt:	<a href="#">Q8NBX0</a>
Pathways:	<a href="#">SARS-CoV-2 Protein Interactome</a>

## Application Details

Application Notes:	Optimal working dilutions should be determined experimentally by the investigator.
Comment:	Antigen size: 429 AA
Restrictions:	For Research Use only

## Handling

Format:	Liquid
Concentration:	Lot specific
Buffer:	Liquid. Purified antibody supplied in 1x PBS buffer with 0.09 % (w/v) sodium azide and 2 % sucrose.
Preservative:	Sodium azide
Precaution of Use:	This product contains Sodium azide: a POISONOUS AND HAZARDOUS SUBSTANCE which should be handled by trained staff only.
Handling Advice:	Avoid repeated freeze-thaw cycles.
Storage:	-20 °C
Storage Comment:	For short term use, store at 2-8°C up to 1 week. For long term storage, store at -20°C in small aliquots to prevent freeze-thaw cycles.



**Western Blotting**

**Image 1. WB Suggested Anti-SCCPDH Antibody Titration:**

0.2-1 ug/ml

**Positive Control:** Human Muscle