

Datasheet for ABIN2785548
anti-SPATA6 antibody (Middle Region)[Go to Product page](#)

1 Image

Overview

Quantity:	100 µL
Target:	SPATA6
Binding Specificity:	Middle Region
Reactivity:	Human, Mouse, Rat, Cow, Dog, Horse, Rabbit, Guinea Pig
Host:	Rabbit
Clonality:	Polyclonal
Conjugate:	This SPATA6 antibody is un-conjugated
Application:	Western Blotting (WB)

Product Details

Immunogen:	The immunogen is a synthetic peptide directed towards the middle region of human SPATA6
Sequence:	SQKKKSKSPE RSKYCINAKN YEQPTISSKS HSPSPYTKRR MCELSIEDTRR
Predicted Reactivity:	Cow: 100%, Dog: 100%, Guinea Pig: 100%, Horse: 100%, Human: 100%, Mouse: 100%, Rabbit: 100%, Rat: 100%
Characteristics:	This is a rabbit polyclonal antibody against SPATA6. It was validated on Western Blot using a cell lysate as a positive control.
Purification:	Affinity Purified

Target Details

Target:	SPATA6
---------	--------

Target Details

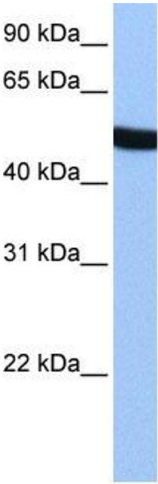
Alternative Name:	SPATA6 (SPATA6 Products)
Background:	<p>SPATA6 belongs to the SPATA6 family. SPATA6 may play a role in spermatid maturation or sperm function.</p> <p>Alias Symbols: FLJ10007, SRF-1, SRF1, HASH</p> <p>Protein Interaction Partner: FUS,</p> <p>Protein Size: 488</p>
Molecular Weight:	54 kDa
Gene ID:	54558
NCBI Accession:	NM_019073 , NP_061946
UniProt:	Q9NWH7

Application Details

Application Notes:	Optimal working dilutions should be determined experimentally by the investigator.
Comment:	Antigen size: 488 AA
Restrictions:	For Research Use only

Handling

Format:	Liquid
Concentration:	Lot specific
Buffer:	Liquid. Purified antibody supplied in 1x PBS buffer with 0.09 % (w/v) sodium azide and 2 % sucrose.
Preservative:	Sodium azide
Precaution of Use:	This product contains Sodium azide: a POISONOUS AND HAZARDOUS SUBSTANCE which should be handled by trained staff only.
Handling Advice:	Avoid repeated freeze-thaw cycles.
Storage:	-20 °C
Storage Comment:	For short term use, store at 2-8°C up to 1 week. For long term storage, store at -20°C in small aliquots to prevent freeze-thaw cycles.



Western Blotting

Image 1. WB Suggested Anti-SPATA6 Antibody Titration:

0.2-1 ug/ml

Positive Control: HepG2 cell lysate