

Datasheet for ABIN2785549
anti-SPATA6 antibody (C-Term)[Go to Product page](#)

1 Image

Overview

Quantity:	100 µL
Target:	SPATA6
Binding Specificity:	C-Term
Reactivity:	Human, Mouse, Rat, Cow, Dog, Horse, Rabbit, Guinea Pig, Pig
Host:	Rabbit
Clonality:	Polyclonal
Application:	Western Blotting (WB)

Product Details

Immunogen:	The immunogen is a synthetic peptide directed towards the C-terminal region of Rat Spata6
Sequence:	RVKDVLSHQ AHGRHLCEER DPEKEDELEL KRSLLYRDSA YDSDPEYSSF
Predicted Reactivity:	Cow: 100%, Dog: 100%, Guinea Pig: 91%, Horse: 100%, Human: 100%, Mouse: 100%, Pig: 100%, Rabbit: 100%, Rat: 100%
Characteristics:	This is a rabbit polyclonal antibody against Spata6. It was validated on Western Blot.
Purification:	Affinity Purified

Target Details

Target:	SPATA6
Alternative Name:	Spata6 (SPATA6 Products)
Background:	Spata6 may function as a molecular motor in meiosis and have a role in spermatogenesis.

Target Details

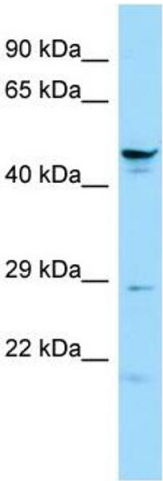
	Alias Symbols: Hash
	Protein Size: 430
Molecular Weight:	47 kDa
Gene ID:	171413
NCBI Accession:	NM_134392 , NP_599219
UniProt:	Q99MU5

Application Details

Application Notes:	Optimal working dilutions should be determined experimentally by the investigator.
Comment:	Antigen size: 430 AA
Restrictions:	For Research Use only

Handling

Format:	Liquid
Concentration:	Lot specific
Buffer:	Liquid. Purified antibody supplied in 1x PBS buffer with 0.09 % (w/v) sodium azide and 2 % sucrose.
Preservative:	Sodium azide
Precaution of Use:	This product contains Sodium azide: a POISONOUS AND HAZARDOUS SUBSTANCE which should be handled by trained staff only.
Handling Advice:	Avoid repeated freeze-thaw cycles.
Storage:	-20 °C
Storage Comment:	For short term use, store at 2-8°C up to 1 week. For long term storage, store at -20°C in small aliquots to prevent freeze-thaw cycles.



Western Blotting

Image 1. WB Suggested Anti-Spata6 Antibody Titration: 1.0 ug/ml Positive Control: Rat Testis