

Datasheet for ABIN2785552
anti-Fascin 3 antibody (C-Term)[Go to Product page](#)

2 Images

Overview

Quantity:	100 µL
Target:	Fascin 3 (FSCN3)
Binding Specificity:	C-Term
Reactivity:	Human, Mouse, Rat, Cow, Rabbit, Pig
Host:	Rabbit
Clonality:	Polyclonal
Conjugate:	This Fascin 3 antibody is un-conjugated
Application:	Western Blotting (WB)

Product Details

Immunogen:	The immunogen is a synthetic peptide directed towards the C terminal region of human FSCN3
Sequence:	YDGEVRAASE RLNRMSLFQF ECDSESPTVQ LRSANGYYLS QRRHRAVMAD
Predicted Reactivity:	Cow: 79%, Human: 100%, Mouse: 86%, Pig: 79%, Rabbit: 93%, Rat: 79%
Characteristics:	This is a rabbit polyclonal antibody against FSCN3. It was validated on Western Blot.
Purification:	Affinity Purified

Target Details

Target:	Fascin 3 (FSCN3)
Alternative Name:	FSCN3 (FSCN3 Products)
Background:	FSCN3 acts as an actin bundling protein.

Target Details

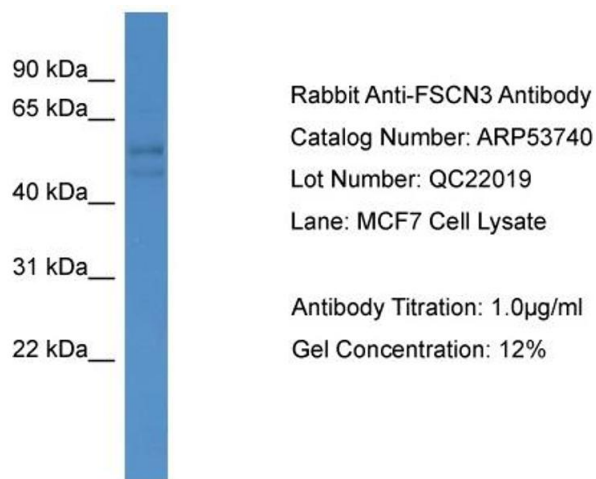
	Alias Symbols: -
	Protein Size: 498
Molecular Weight:	55 kDa
Gene ID:	29999
NCBI Accession:	NM_020369 , NP_065102
UniProt:	Q9NQT6

Application Details

Application Notes:	Optimal working dilutions should be determined experimentally by the investigator.
Comment:	Antigen size: 498 AA
Restrictions:	For Research Use only

Handling

Format:	Liquid
Concentration:	Lot specific
Buffer:	Liquid. Purified antibody supplied in 1x PBS buffer with 0.09 % (w/v) sodium azide and 2 % sucrose.
Preservative:	Sodium azide
Precaution of Use:	This product contains Sodium azide: a POISONOUS AND HAZARDOUS SUBSTANCE which should be handled by trained staff only.
Handling Advice:	Avoid repeated freeze-thaw cycles.
Storage:	-20 °C
Storage Comment:	For short term use, store at 2-8°C up to 1 week. For long term storage, store at -20°C in small aliquots to prevent freeze-thaw cycles.



Western Blotting

Image 1. WB Suggested Anti-FSCN3

Antibody Titration: 0.2-1 µg/mL ELISA Titer: 1::2500

Positive Control: MCF7 cell lysate



Western Blotting

Image 2. WB Suggested Anti-FSCN3 Antibody Titration:

0.2-1 ug/ml

ELISA Titer: 1:62500

Positive Control: MCF7 cell lysate