

Datasheet for ABIN2785554 anti-LYZL6 antibody (N-Term)



[Go to Product page](#)

1 Image

Overview

Quantity:	100 µL
Target:	LYZL6
Binding Specificity:	N-Term
Reactivity:	Human, Mouse, Rat, Pig, Rabbit, Cow, Dog, Horse, Guinea Pig
Host:	Rabbit
Clonality:	Polyclonal
Conjugate:	This LYZL6 antibody is un-conjugated
Application:	Western Blotting (WB)

Product Details

Immunogen:	The immunogen is a synthetic peptide directed towards the N terminal region of human LYZL6
Sequence:	MTKALLIYLV SSFLALNQAS LISRCDLAQV LQLEDLDGFE GYSLSDWLCL
Predicted Reactivity:	Cow: 100%, Dog: 100%, Guinea Pig: 92%, Horse: 100%, Human: 100%, Mouse: 100%, Pig: 100%, Rabbit: 75%, Rat: 100%
Characteristics:	This is a rabbit polyclonal antibody against LYZL6. It was validated on Western Blot using a cell lysate as a positive control.
Purification:	Affinity Purified

Target Details

Target:	LYZL6
---------	-------

Target Details

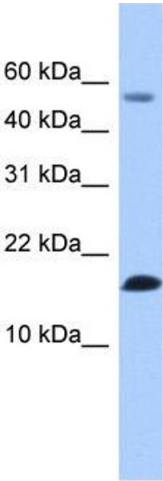
Alternative Name:	LYZL6 (LYZL6 Products)
Background:	<p>LYZL6 belongs to the glycosyl hydrolase 22 family. The exact function of LYZL6 remains unknown.</p> <p>Alias Symbols: 1700023H08Rik, LYC1, PRO1485, TKAL754, UNQ754</p> <p>Protein Size: 148</p>
Molecular Weight:	16 kDa
Gene ID:	57151
NCBI Accession:	NM_020426 , NP_065159
UniProt:	O75951

Application Details

Application Notes:	Optimal working dilutions should be determined experimentally by the investigator.
Comment:	Antigen size: 148 AA
Restrictions:	For Research Use only

Handling

Format:	Liquid
Concentration:	Lot specific
Buffer:	Liquid. Purified antibody supplied in 1x PBS buffer with 0.09 % (w/v) sodium azide and 2 % sucrose.
Preservative:	Sodium azide
Precaution of Use:	This product contains Sodium azide: a POISONOUS AND HAZARDOUS SUBSTANCE which should be handled by trained staff only.
Handling Advice:	Avoid repeated freeze-thaw cycles.
Storage:	-20 °C
Storage Comment:	For short term use, store at 2-8°C up to 1 week. For long term storage, store at -20°C in small aliquots to prevent freeze-thaw cycles.



Western Blotting

Image 1. WB Suggested Anti-LYZL6 Antibody Titration:

0.2-1 ug/ml

Positive Control: Human Lung