

Datasheet for ABIN2785558
anti-AGBL5 antibody (C-Term)



[Go to Product page](#)

1 Image

Overview

Quantity:	100 µL
Target:	AGBL5
Binding Specificity:	C-Term
Reactivity:	Human, Mouse, Horse, Cow, Rat, Guinea Pig, Pig, Dog, Rabbit
Host:	Rabbit
Clonality:	Polyclonal
Conjugate:	This AGBL5 antibody is un-conjugated
Application:	Western Blotting (WB)

Product Details

Immunogen:	The immunogen is a synthetic peptide directed towards the C terminal region of human AGBL5
Sequence:	RGLSSTLNVG VNKKRGLRTP PKSHNGLPVS CSENTLSRAR SFSTGTSAGG
Predicted Reactivity:	Cow: 100%, Dog: 100%, Guinea Pig: 93%, Horse: 100%, Human: 100%, Mouse: 86%, Pig: 100%, Rabbit: 100%, Rat: 100%
Characteristics:	This is a rabbit polyclonal antibody against AGBL5. It was validated on Western Blot using a cell lysate as a positive control.
Purification:	Affinity Purified

Target Details

Target:	AGBL5
---------	-------

Target Details

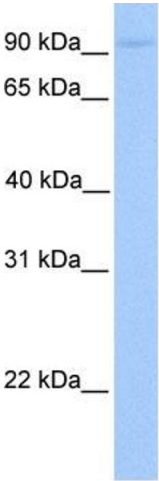
Alternative Name:	AGBL5 (AGBL5 Products)
Background:	AGBL5 belongs to the peptidase M14 family. The exact function of AGBL5 remains unknown. Alias Symbols: FLJ21839 Protein Interaction Partner: Dlg4, Protein Size: 724
Molecular Weight:	80 kDa
Gene ID:	60509
NCBI Accession:	NM_021831 , NP_068603
UniProt:	Q8NDL9

Application Details

Application Notes:	Optimal working dilutions should be determined experimentally by the investigator.
Comment:	Antigen size: 724 AA
Restrictions:	For Research Use only

Handling

Format:	Liquid
Concentration:	Lot specific
Buffer:	Liquid. Purified antibody supplied in 1x PBS buffer with 0.09 % (w/v) sodium azide and 2 % sucrose.
Preservative:	Sodium azide
Precaution of Use:	This product contains Sodium azide: a POISONOUS AND HAZARDOUS SUBSTANCE which should be handled by trained staff only.
Handling Advice:	Avoid repeated freeze-thaw cycles.
Storage:	-20 °C
Storage Comment:	For short term use, store at 2-8°C up to 1 week. For long term storage, store at -20°C in small aliquots to prevent freeze-thaw cycles.



Western Blotting

Image 1. WB Suggested Anti-AGBL5 Antibody Titration:

0.2-1 ug/ml

Positive Control: 721_B cell lysate