

Datasheet for ABIN2785560  
**anti-MLF1 antibody (N-Term)**



[Go to Product page](#)

1 Image

1 Publication

## Overview

Quantity:	100 µL
Target:	MLF1
Binding Specificity:	N-Term
Reactivity:	Human, Mouse, Rat, Rabbit
Host:	Rabbit
Clonality:	Polyclonal
Conjugate:	This MLF1 antibody is un-conjugated
Application:	Western Blotting (WB)

## Product Details

Immunogen:	The immunogen is a synthetic peptide directed towards the N terminal region of human MLF1
Sequence:	GRDLLSISDG RGRAHNRGRGH NDGEDSLTHT DVSSFQTMDDQ MVSNMNRNYMQ
Predicted Reactivity:	Human: 100%, Mouse: 79%, Rabbit: 90%, Rat: 79%
Characteristics:	This is a rabbit polyclonal antibody against MLF1. It was validated on Western Blot using a cell lysate as a positive control.
Purification:	Affinity Purified

## Target Details

Target:	MLF1
Alternative Name:	MLF1 ( <a href="#">MLF1 Products</a> )

## Target Details

---

**Background:** MLF1 is involved in lineage commitment of primary hemopoietic progenitors by restricting erythroid formation and enhancing myeloid formation. It interferes with erythropoietin-induced erythroid terminal differentiation by preventing cells from exiting the cell cycle through suppression of CDKN1B/p27Kip1 levels. MLF1 suppresses RFD2/COP1 activity via CSN3 which activates p53 and induces cell cycle arrest. It binds DNA and affects the expression of a number of genes so may function as a transcription factor in the nucleus.

Alias Symbols: -

Protein Interaction Partner: CENPU, COPS3, UBC, NRBP1, YWHAZ, GRIK5, MAGEA11,

Protein Size: 268

---

**Molecular Weight:** 29 kDa

---

**Gene ID:** 4291

---

**NCBI Accession:** [NM\\_022443](#), [NP\\_071888](#)

---

**UniProt:** [P58340](#)

## Application Details

---

**Application Notes:** Optimal working dilutions should be determined experimentally by the investigator.

---

**Comment:** Antigen size: 268 AA

---

**Restrictions:** For Research Use only

## Handling

---

**Format:** Liquid

---

**Concentration:** Lot specific

---

**Buffer:** Liquid. Purified antibody supplied in 1x PBS buffer with 0.09 % (w/v) sodium azide and 2 % sucrose.

---

**Preservative:** Sodium azide

---

**Precaution of Use:** This product contains Sodium azide: a POISONOUS AND HAZARDOUS SUBSTANCE which should be handled by trained staff only.

---

**Handling Advice:** Avoid repeated freeze-thaw cycles.

---

**Storage:** -20 °C

---

**Storage Comment:** For short term use, store at 2-8°C up to 1 week. For long term storage, store at -20°C in small

aliquots to prevent freeze-thaw cycles.

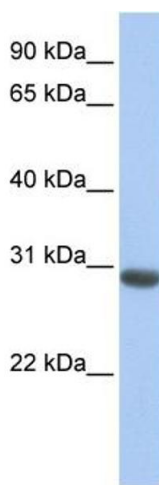
Publications

---

Product cited in: Li, Wu, Jiang, Liu, Wu, Inagaki, Izawa, Mizisin, Engvall, Shelton: "Non-pathogenic protein aggregates in skeletal muscle in MLF1 transgenic mice." in: **Journal of the neurological sciences**, Vol. 264, Issue 1-2, pp. 77-86, (2007) ([PubMed](#)).

Images

---



**Western Blotting**

**Image 1. WB Suggested Anti-MLF1 Antibody Titration:**

0.2-1 ug/ml

**Positive Control:** Human Liver