

Datasheet for ABIN2785565
anti-ODF1 antibody (Middle Region)[Go to Product page](#)

1 Image

2 Publications

Overview

Quantity:	100 µL
Target:	ODF1
Binding Specificity:	Middle Region
Reactivity:	Human, Mouse, Rat, Cow, Dog, Goat, Guinea Pig, Horse, Rabbit
Host:	Rabbit
Clonality:	Polyclonal
Conjugate:	This ODF1 antibody is un-conjugated
Application:	Western Blotting (WB)

Product Details

Immunogen:	The immunogen is a synthetic peptide corresponding to a region of Mouse
Sequence:	VCGFEPDQVK VRVKDGKVCV SAERENRYDC LGSKKYSYMN ICKEFSLPPC
Predicted Reactivity:	Cow: 100%, Dog: 100%, Goat: 100%, Guinea Pig: 100%, Horse: 100%, Human: 100%, Mouse: 100%, Rabbit: 100%, Rat: 100%
Characteristics:	This is a rabbit polyclonal antibody against Odf1. It was validated on Western Blot.
Purification:	Affinity Purified

Target Details

Target:	ODF1
Alternative Name:	Odf1 (ODF1 Products)

Target Details

Background: Odf1 is a component of the outer dense fibers (ODF) of spermatozoa. ODF are filamentous structures located on the outside of the axoneme in the midpiece and principal piece of the mammalian sperm tail and may help to maintain the passive elastic structures and elastic recoil of the sperm tail.

Alias Symbols: -

Protein Size: 247

Molecular Weight: 27 kDa

Gene ID: 18285

NCBI Accession: [NM_008757](#), [NP_032783](#)

UniProt: [Q61999](#)

Application Details

Application Notes: Optimal working dilutions should be determined experimentally by the investigator.

Comment: Antigen size: 247 AA

Restrictions: For Research Use only

Handling

Format: Liquid

Concentration: Lot specific

Buffer: Liquid. Purified antibody supplied in 1x PBS buffer with 0.09 % (w/v) sodium azide and 2 % sucrose.

Preservative: Sodium azide

Precaution of Use: This product contains Sodium azide: a POISONOUS AND HAZARDOUS SUBSTANCE which should be handled by trained staff only.

Handling Advice: Avoid repeated freeze-thaw cycles.

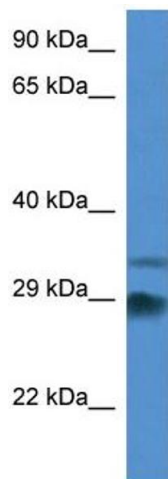
Storage: -20 °C

Storage Comment: For short term use, store at 2-8°C up to 1 week. For long term storage, store at -20°C in small aliquots to prevent freeze-thaw cycles.

Publications

Product cited in: Ewing, Chu, Elisma, Li, Taylor, Climie, McBroom-Cerajewski, Robinson, OConnor, Li, Taylor, Dharsee, Ho, Heilbut, Moore, Zhang, Ornatsky, Bukhman, Ethier, Sheng, Vasilescu, Abu-Farha, Lambert, Duewel et al.: "Large-scale mapping of human protein-protein interactions by mass spectrometry. ..." in: **Molecular systems biology**, Vol. 3, pp. 89, (2007) ([PubMed](#)).

Images



Western Blotting

Image 1. WB Suggested Anti-Odf1 Antibody Titration: 1.0 ug/ml Positive Control: Mouse Heart