



[Go to Product page](#)

Datasheet for ABIN2785567

## anti-ZC2HC1C antibody (N-Term)

1 Image

1 Publication

### Overview

Quantity:	100 µL
Target:	ZC2HC1C
Binding Specificity:	N-Term
Reactivity:	Human, Rat, Mouse, Horse, Dog, Guinea Pig, Pig
Host:	Rabbit
Clonality:	Polyclonal
Conjugate:	This ZC2HC1C antibody is un-conjugated
Application:	Western Blotting (WB)

### Product Details

Immunogen:	The immunogen is a synthetic peptide directed towards the N terminal region of human C14orf140
Sequence:	QQDPESDSQG QGNGLFYSSG PQSWYPKANN QDFIPFTKKR VGVDRAPFLK
Predicted Reactivity:	Dog: 93%, Guinea Pig: 79%, Horse: 100%, Human: 100%, Mouse: 79%, Pig: 86%, Rat: 86%
Characteristics:	This is a rabbit polyclonal antibody against C14orf140. It was validated on Western Blot using a cell lysate as a positive control.
Purification:	Affinity Purified

### Target Details

Target:	ZC2HC1C
---------	---------

## Target Details

---

Alternative Name:	C14orf140 ( <a href="#">ZC2HC1C Products</a> )
Background:	<p>C14orf140 belongs to the UPF0418 family. The exact function of C14orf140 remains unknown.</p> <p>Alias Symbols: FLJ23093, FAM164C, C14orf140</p> <p>Protein Interaction Partner: SPERT, KRT40, FSD2, CCDC136, BANP, HOOK2, RABGEF1, TFIP11, MTUS2, EMILIN1, MID2, SPAG5, PNMA1, TRAF2, TRAF1, TRIM27, KRT15, SFN, GFAP, TRIM23, CCDC85B, KRT20, CALCOCO2,</p> <p>Protein Size: 275</p>
Molecular Weight:	31 kDa
Gene ID:	79696
NCBI Accession:	<a href="#">NM_001042430</a> , <a href="#">NP_001035895</a>
UniProt:	<a href="#">Q53FD0</a>

## Application Details

---

Application Notes:	Optimal working dilutions should be determined experimentally by the investigator.
Comment:	Antigen size: 275 AA
Restrictions:	For Research Use only

## Handling

---

Format:	Liquid
Concentration:	Lot specific
Buffer:	Liquid. Purified antibody supplied in 1x PBS buffer with 0.09 % (w/v) sodium azide and 2 % sucrose.
Preservative:	Sodium azide
Precaution of Use:	This product contains Sodium azide: a POISONOUS AND HAZARDOUS SUBSTANCE which should be handled by trained staff only.
Handling Advice:	Avoid repeated freeze-thaw cycles.
Storage:	-20 °C
Storage Comment:	For short term use, store at 2-8°C up to 1 week. For long term storage, store at -20°C in small aliquots to prevent freeze-thaw cycles.

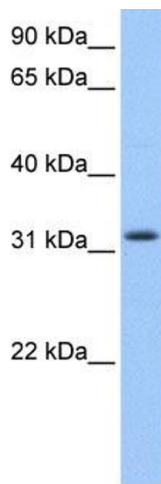
## Publications

---

Product cited in: Suzuki, Yoshitomo-Nakagawa, Maruyama, Suyama, Sugano: "Construction and characterization of a full length-enriched and a 5'-end-enriched cDNA library." in: **Gene**, Vol. 200, Issue 1-2, pp. 149-56, (1997) ([PubMed](#)).

## Images

---



### Western Blotting

**Image 1. WB Suggested Anti-C14orf140 Antibody**

**Titration:** 0.2-1 ug/ml

**Positive Control:** 721\_B cell lysate