

Datasheet for ABIN2785569
anti-CLMN antibody (C-Term)



[Go to Product page](#)

1 Image

Overview

Quantity:	100 µL
Target:	CLMN
Binding Specificity:	C-Term
Reactivity:	Human, Mouse, Cow, Dog, Saccharomyces cerevisiae, Pig
Host:	Rabbit
Clonality:	Polyclonal
Conjugate:	This CLMN antibody is un-conjugated
Application:	Western Blotting (WB)

Product Details

Immunogen:	The immunogen is a synthetic peptide directed towards the C terminal region of human CLMN
Sequence:	LEENVTKESI SSKKKEKRKH VDHVESSLFV APGSVQSSDD LEEDSSDYSI
Predicted Reactivity:	Cow: 77%, Dog: 77%, Human: 100%, Mouse: 77%, Pig: 85%, Yeast: 92%
Characteristics:	This is a rabbit polyclonal antibody against CLMN. It was validated on Western Blot using a cell lysate as a positive control.
Purification:	Affinity Purified

Target Details

Target:	CLMN
Alternative Name:	CLMN (CLMN Products)

Target Details

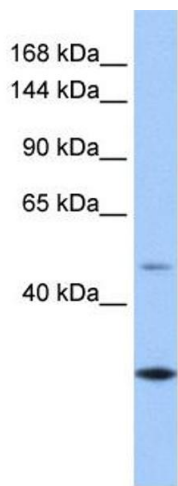
Background:	CLMN is a single-pass type IV membrane protein. It contains 1 actin-binding domain and 2 CH (calponin-homology) domains. The exact function of CLMN remains unknown. Alias Symbols: FLJ12383, KIAA1188 Protein Interaction Partner: PPP1CC, Protein Size: 1002
Molecular Weight:	110 kDa
Gene ID:	79789
NCBI Accession:	NM_024734 , NP_079010
UniProt:	Q96JQ2

Application Details

Application Notes:	Optimal working dilutions should be determined experimentally by the investigator.
Comment:	Antigen size: 1002 AA
Restrictions:	For Research Use only

Handling

Format:	Liquid
Concentration:	Lot specific
Buffer:	Liquid. Purified antibody supplied in 1x PBS buffer with 0.09 % (w/v) sodium azide and 2 % sucrose.
Preservative:	Sodium azide
Precaution of Use:	This product contains Sodium azide: a POISONOUS AND HAZARDOUS SUBSTANCE which should be handled by trained staff only.
Handling Advice:	Avoid repeated freeze-thaw cycles.
Storage:	-20 °C
Storage Comment:	For short term use, store at 2-8°C up to 1 week. For long term storage, store at -20°C in small aliquots to prevent freeze-thaw cycles.



Western Blotting

Image 1. WB Suggested Anti-CLMN Antibody Titration:
0.2-1 ug/ml

Positive Control: Human Liver