

Datasheet for ABIN2785579
anti-CLPB antibody (N-Term)



[Go to Product page](#)

1 Image

Overview

Quantity:	100 µL
Target:	CLPB
Binding Specificity:	N-Term
Reactivity:	Human, Mouse, Rat, Rabbit, Dog, Horse, Cow, Pig
Host:	Rabbit
Clonality:	Polyclonal
Conjugate:	This CLPB antibody is un-conjugated
Application:	Western Blotting (WB)

Product Details

Immunogen:	The immunogen is a synthetic peptide directed towards the N terminal region of human CLPB
Sequence:	QGGRFDTKCL AAATWGRLPG PEETLPGQDS WNGVPSRAGL GMCALAAALV
Predicted Reactivity:	Cow: 86%, Dog: 93%, Horse: 93%, Human: 100%, Mouse: 92%, Pig: 77%, Rabbit: 85%, Rat: 92%
Characteristics:	This is a rabbit polyclonal antibody against CLPB. It was validated on Western Blot using a cell lysate as a positive control.
Purification:	Affinity Purified

Target Details

Target:	CLPB
Alternative Name:	CLPB (CLPB Products)

Target Details

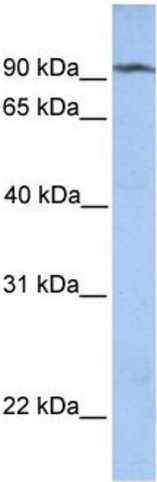
Background:	CLPB belongs to the clpA/clpB family. It contains 4 ANK repeats. CLPB may function as a regulatory ATPase and be related to secretion/protein trafficking process. Alias Symbols: FLJ13152, HSP78, SKD3 Protein Interaction Partner: CEP70, IRS4, UBC, HDAC11, MDFI, SMAD9, CUL3, TERF2, UCHL3, OSBPL10, USP30, COPS6, TTF2, Protein Size: 707
Molecular Weight:	78 kDa
Gene ID:	81570
NCBI Accession:	NM_030813 , NP_110440
UniProt:	Q9H078

Application Details

Application Notes:	Optimal working dilutions should be determined experimentally by the investigator.
Comment:	Antigen size: 707 AA
Restrictions:	For Research Use only

Handling

Format:	Liquid
Concentration:	Lot specific
Buffer:	Liquid. Purified antibody supplied in 1x PBS buffer with 0.09 % (w/v) sodium azide and 2 % sucrose.
Preservative:	Sodium azide
Precaution of Use:	This product contains Sodium azide: a POISONOUS AND HAZARDOUS SUBSTANCE which should be handled by trained staff only.
Handling Advice:	Avoid repeated freeze-thaw cycles.
Storage:	-20 °C
Storage Comment:	For short term use, store at 2-8°C up to 1 week. For long term storage, store at -20°C in small aliquots to prevent freeze-thaw cycles.



Western Blotting

Image 1. WB Suggested Anti-CLPB Antibody Titration:
0.2-1 ug/ml

Positive Control: MCF7 cell lysate