



[Go to Product page](#)

Datasheet for ABIN2785582
anti-SHCBP1L antibody (N-Term)

1 Image

Overview

Quantity:	100 µL
Target:	SHCBP1L
Binding Specificity:	N-Term
Reactivity:	Human
Host:	Rabbit
Clonality:	Polyclonal
Conjugate:	This SHCBP1L antibody is un-conjugated
Application:	Western Blotting (WB)

Product Details

Sequence:	SFRTISPDRR GEKSASAVSG DTAAATTLKG TAIPVRSVVA SPRPVKGKAG
Predicted Reactivity:	Human: 100%
Characteristics:	This is a rabbit polyclonal antibody against SHCBP1L. It was validated on Western Blot.
Purification:	Affinity Purified

Target Details

Target:	SHCBP1L
Alternative Name:	SHCBP1L (SHCBP1L Products)
Background:	The function of this protein remains unknown. Alias Symbols: GE36, MGC26911, MGC48296, SHCBP1L, C1orf14

Target Details

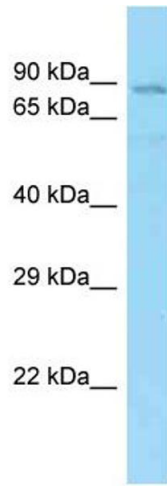
	Protein Size: 725
Molecular Weight:	80 kDa
Gene ID:	81626
NCBI Accession:	NM_030933 , NP_112195
UniProt:	Q9BZQ2

Application Details

Application Notes:	Optimal working dilutions should be determined experimentally by the investigator.
Comment:	Antigen size: 725 AA
Restrictions:	For Research Use only

Handling

Format:	Liquid
Concentration:	Lot specific
Buffer:	Liquid. Purified antibody supplied in 1x PBS buffer with 0.09 % (w/v) sodium azide and 2 % sucrose.
Preservative:	Sodium azide
Precaution of Use:	This product contains Sodium azide: a POISONOUS AND HAZARDOUS SUBSTANCE which should be handled by trained staff only.
Handling Advice:	Avoid repeated freeze-thaw cycles.
Storage:	-20 °C
Storage Comment:	For short term use, store at 2-8°C up to 1 week. For long term storage, store at -20°C in small aliquots to prevent freeze-thaw cycles.



Western Blotting

Image 1. WB Suggested Anti-SHCBP1L Antibody Titration:

1.0 ug/ml Positive Control: PANC1 Whole Cell