

Datasheet for ABIN2785591  
**anti-GK2 antibody (N-Term)**[Go to Product page](#)

## 2 Images

## Overview

Quantity:	100 µL
Target:	GK2
Binding Specificity:	N-Term
Reactivity:	Human, Rat, Mouse, Horse, Guinea Pig, Rabbit, Cow, Dog
Host:	Rabbit
Clonality:	Polyclonal
Conjugate:	This GK2 antibody is un-conjugated
Application:	Western Blotting (WB)

## Product Details

Immunogen:	The immunogen is a synthetic peptide directed towards the N terminal region of human GK2
Sequence:	DKLTGEPLYN AVVWLDLRTQ TTVEDLSKKI PGNSNFVKSK TGLPLSTYFS
Predicted Reactivity:	Cow: 85%, Dog: 85%, Guinea Pig: 86%, Horse: 86%, Human: 100%, Mouse: 85%, Rabbit: 86%, Rat: 86%
Characteristics:	This is a rabbit polyclonal antibody against GK2. It was validated on Western Blot.
Purification:	Affinity Purified

## Target Details

Target:	GK2
Alternative Name:	GK2 ( <a href="#">GK2 Products</a> )

## Target Details

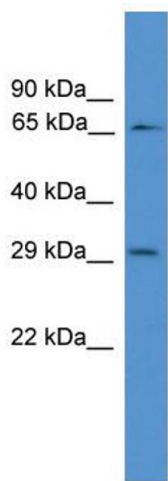
Background:	GK2 belongs to the FGGY kinase family. GK2 is a key enzyme in the regulation of glycerol uptake and metabolism. Alias Symbols: GKP2, GKTA Protein Size: 553
Molecular Weight:	61 kDa
Gene ID:	2712
NCBI Accession:	<a href="#">NM_033214</a> , <a href="#">NP_149991</a>
UniProt:	<a href="#">Q14410</a>

## Application Details

Application Notes:	Optimal working dilutions should be determined experimentally by the investigator.
Comment:	Antigen size: 553 AA
Restrictions:	For Research Use only

## Handling

Format:	Liquid
Concentration:	Lot specific
Buffer:	Liquid. Purified antibody supplied in 1x PBS buffer with 0.09 % (w/v) sodium azide and 2 % sucrose.
Preservative:	Sodium azide
Precaution of Use:	This product contains Sodium azide: a POISONOUS AND HAZARDOUS SUBSTANCE which should be handled by trained staff only.
Handling Advice:	Avoid repeated freeze-thaw cycles.
Storage:	-20 °C
Storage Comment:	For short term use, store at 2-8°C up to 1 week. For long term storage, store at -20°C in small aliquots to prevent freeze-thaw cycles.

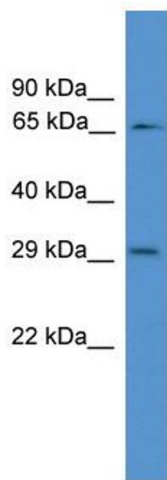


**Western Blotting**

**Image 1. WB Suggested Anti-GK2 Antibody Titration:** 0.2-1 ug/ml

**ELISA Titer:** 1:1562500

**Positive Control:** Human Lung



**Rabbit Anti-GK2 Antibody**  
**Catalog Number:** ARP53814  
**Lot Number:** QC29506  
**Lane:** Fetal Lung Lysate

**Antibody Titration:** 1.0µg/ml  
**Gel Concentration:** 12%

**Western Blotting**

**Image 2. WB Suggested Anti-GK2**

**Antibody Titration:** 0.2-1 µg/mL **ELISA Titer:** 1:1562500

**Positive Control:** Human Lung