

Datasheet for ABIN2785607
anti-GTF2A1L antibody (C-Term)[Go to Product page](#)

2 Images

Overview

Quantity:	100 µL
Target:	GTF2A1L
Binding Specificity:	C-Term
Reactivity:	Human, Dog, Horse, Rat, Mouse, Cow
Host:	Rabbit
Clonality:	Polyclonal
Conjugate:	This GTF2A1L antibody is un-conjugated
Application:	Western Blotting (WB)

Product Details

Immunogen:	The immunogen is a synthetic peptide directed towards the C terminal region of human GTF2A1L
Sequence:	EFLGNIDGGD LKVPEEEADS ISNEDSATNS SDNEDPQVNI VEEDPLNSGD
Predicted Reactivity:	Cow: 79%, Dog: 86%, Horse: 86%, Human: 100%, Mouse: 79%, Rat: 86%
Characteristics:	This is a rabbit polyclonal antibody against GTF2A1L. It was validated on Western Blot.
Purification:	Affinity Purified

Target Details

Target:	GTF2A1L
Alternative Name:	GTF2A1L (GTF2A1L Products)

Target Details

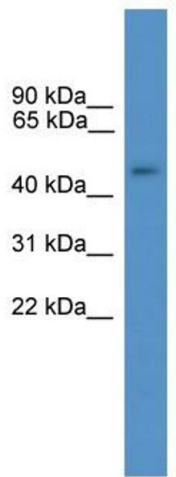
Background:	<p>The assembly and stability of the RNA polymerase II transcription pre-initiation complex on a eukaryotic core promoter involve the effects of TFIIA on the interaction between TATA-binding protein (TBP) and DNA. This gene encodes a germ cell-specific counterpart of the large (alpha/beta) subunit of general transcription factor TFIIA that is able to stabilize the binding of TBP to DNA and may be uniquely important to testis biology.</p> <p>Alias Symbols: ALF, MGC26254</p> <p>Protein Interaction Partner: GAB1, NKX2-3, ZBTB3, TLX3, MAFF, RBFOX2, HMG20A, PAX9, SIX6, MAFG, HOXC11, HOXC9, HOXA5, TLX2, EMX2, EMX1, CEBPE, ATF4, ASCL3, GTF2A2, SUB1, ID3, CSNK2A2, CSNK2A1, TBP,</p> <p>Protein Size: 453</p>
Molecular Weight:	49 kDa
Gene ID:	11036
NCBI Accession:	NM_172196 , NP_751946

Application Details

Application Notes:	Optimal working dilutions should be determined experimentally by the investigator.
Comment:	Antigen size: 453 AA
Restrictions:	For Research Use only

Handling

Format:	Liquid
Concentration:	Lot specific
Buffer:	Liquid. Purified antibody supplied in 1x PBS buffer with 0.09 % (w/v) sodium azide and 2 % sucrose.
Preservative:	Sodium azide
Precaution of Use:	This product contains Sodium azide: a POISONOUS AND HAZARDOUS SUBSTANCE which should be handled by trained staff only.
Handling Advice:	Avoid repeated freeze-thaw cycles.
Storage:	-20 °C
Storage Comment:	For short term use, store at 2-8°C up to 1 week. For long term storage, store at -20°C in small aliquots to prevent freeze-thaw cycles.



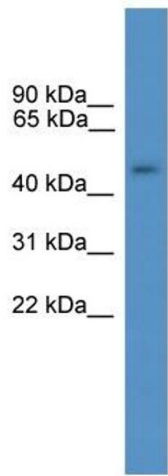
Western Blotting

Image 1. WB Suggested Anti-GTF2A1L Antibody Titration:

0.2-1 ug/ml

ELISA Titer: 1:62500

Positive Control: Human Placenta



Rabbit Anti-GTF2A1L Antibody
Catalog Number: ARP53837
Lot Number: QC30464
Lane: Placenta Lysate

Antibody Titration: 1.0µg/ml
Gel Concentration: 12%

Western Blotting

Image 2. WB Suggested Anti-GTF2A1L

Antibody Titration: 0.2-1 µg/mL ELISA Titer: 1::2500

Positive Control: Human Placenta