

Datasheet for ABIN2785611  
**anti-TEX14 antibody (Middle Region)**

## 2 Images

[Go to Product page](#)

## Overview

Quantity:	100 µL
Target:	TEX14
Binding Specificity:	Middle Region
Reactivity:	Human, Horse, Rabbit, Rat, Cow, Dog, Pig
Host:	Rabbit
Clonality:	Polyclonal
Conjugate:	This TEX14 antibody is un-conjugated
Application:	Western Blotting (WB)

## Product Details

Immunogen:	The immunogen is a synthetic peptide directed towards the middle region of human TEX14
Sequence:	TPDGEYFYSS TAQENLALET SSPIEEDFEG IQGAFAQPQV SGEEKFQMRK
Predicted Reactivity:	Cow: 86%, Dog: 79%, Horse: 82%, Human: 100%, Pig: 85%, Rabbit: 79%, Rat: 79%
Characteristics:	This is a rabbit polyclonal antibody against TEX14. It was validated on Western Blot.
Purification:	Affinity Purified

## Target Details

Target:	TEX14
Alternative Name:	TEX14 ( <a href="#">TEX14 Products</a> )
Background:	TEX14 belongs to the protein kinase superfamily. It contains 3 ANK repeats and 1 protein

## Target Details

kinase domain. TEX14 is required for spermatogenesis and male fertility. It may be required for normal structure of the intercellular bridge that connects spermatocytes and spermatogonia. It has no protein kinase activity.

Alias Symbols: CT113

Protein Interaction Partner: TEX14, CEP55,

Protein Size: 1491

Molecular Weight: 164 kDa

Gene ID: 56155

NCBI Accession: [NM\\_198393](#), [NP\\_938207](#)

Pathways: [Maintenance of Protein Location](#)

## Application Details

Application Notes: Optimal working dilutions should be determined experimentally by the investigator.

Comment: Antigen size: 1491 AA

Restrictions: For Research Use only

## Handling

Format: Liquid

Concentration: Lot specific

Buffer: Liquid. Purified antibody supplied in 1x PBS buffer with 0.09 % (w/v) sodium azide and 2 % sucrose.

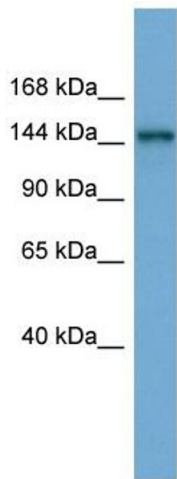
Preservative: Sodium azide

Precaution of Use: This product contains Sodium azide: a POISONOUS AND HAZARDOUS SUBSTANCE which should be handled by trained staff only.

Handling Advice: Avoid repeated freeze-thaw cycles.

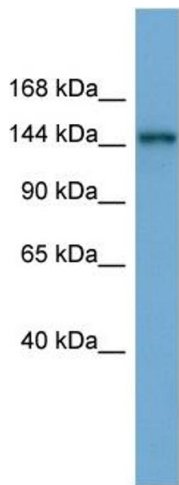
Storage: -20 °C

Storage Comment: For short term use, store at 2-8°C up to 1 week. For long term storage, store at -20°C in small aliquots to prevent freeze-thaw cycles.



**Western Blotting**

**Image 1. WB Suggested Anti-TEX14 Antibody Titration:**  
0.2-1 ug/ml  
**ELISA Titer:** 1:312500  
**Positive Control:** HepG2 cell lysate



Rabbit Anti-TEX14 Antibody  
Catalog Number: ARP53843  
Lot Number: QC29512  
Lane: HepG2 Cell Lysate

Antibody Titration: 1.0µg/ml  
Gel Concentration: 6-18%

**Western Blotting**

**Image 2. WB Suggested Anti-TEX14**  
Antibody Titration: 0.2-1 µg/mL ELISA Titer: 1::12500  
Positive Control: HepG2 cell lysate