

Datasheet for ABIN2785636  
**anti-ETFA antibody (N-Term)**[Go to Product page](#)

## 2 Images

## Overview

Quantity:	100 µL
Target:	ETFA
Binding Specificity:	N-Term
Reactivity:	Human, Mouse, Rat, Cow, Dog, Rabbit, Horse, Guinea Pig
Host:	Rabbit
Clonality:	Polyclonal
Conjugate:	This ETFA antibody is un-conjugated
Application:	Western Blotting (WB)

## Product Details

Immunogen:	The immunogen is a synthetic peptide directed towards the N terminal region of human ETFA
Sequence:	FRAAAPGQLR RAASLLRFQS TLVIAEHAND SLAPITLNTI TAATRLGGEV
Predicted Reactivity:	Cow: 93%, Dog: 93%, Guinea Pig: 100%, Horse: 86%, Human: 100%, Mouse: 100%, Rabbit: 100%, Rat: 100%
Characteristics:	This is a rabbit polyclonal antibody against ETFA. It was validated on Western Blot using a cell lysate as a positive control.
Purification:	Affinity Purified

## Target Details

Target:	ETFA
---------	------

## Target Details

Alternative Name:	ETFA ( <a href="#">ETFA Products</a> )
Background:	<p>ETFA participates in catalyzing the initial step of the mitochondrial fatty acid beta-oxidation. It shuttles electrons between primary flavoprotein dehydrogenases and the membrane-bound electron transfer flavoprotein ubiquinone oxidoreductase. Defects in electron-transfer-flavoprotein have been implicated in type II glutaricaciduria in which multiple acyl-CoA dehydrogenase deficiencies result in large excretion of glutaric, lactic, ethylmalonic, butyric, isobutyric, 2-methyl-butyric, and isovaleric acids.ETFA participates in catalyzing the initial step of the mitochondrial fatty acid beta-oxidation. It shuttles electrons between primary flavoprotein dehydrogenases and the membrane-bound electron transfer flavoprotein ubiquinone oxidoreductase. Defects in electron-transfer-flavoprotein have been implicated in type II glutaricaciduria in which multiple acyl-CoA dehydrogenase deficiencies result in large excretion of glutaric, lactic, ethylmalonic, butyric, isobutyric, 2-methyl-butyric, and isovaleric acids. Two transcript variants encoding different isoforms have been found for this gene.</p> <p>Alias Symbols: EMA, GA2, MADD</p> <p>Protein Interaction Partner: SUMO2, MDM2, PSEN1, PPP6R3, BAG3, TPM1, UBC, SORD, HADHA, ETFB, CDC42, HDAC5, MYC, ICT1, UBA5, DDA1, ATG101,</p> <p>Protein Size: 333</p>
Molecular Weight:	35 kDa
Gene ID:	2108
NCBI Accession:	<a href="#">NM_000126</a> , <a href="#">NP_000117</a>
UniProt:	<a href="#">P13804</a>
Pathways:	<a href="#">SARS-CoV-2 Protein Interactome</a>

## Application Details

Application Notes:	Optimal working dilutions should be determined experimentally by the investigator.
Comment:	Antigen size: 333 AA
Restrictions:	For Research Use only

## Handling

Format:	Liquid
Concentration:	Lot specific

## Handling

Buffer:	Liquid. Purified antibody supplied in 1x PBS buffer with 0.09 % (w/v) sodium azide and 2 % sucrose.
Preservative:	Sodium azide
Precaution of Use:	This product contains Sodium azide: a POISONOUS AND HAZARDOUS SUBSTANCE which should be handled by trained staff only.
Handling Advice:	Avoid repeated freeze-thaw cycles.
Storage:	-20 °C
Storage Comment:	For short term use, store at 2-8°C up to 1 week. For long term storage, store at -20°C in small aliquots to prevent freeze-thaw cycles.

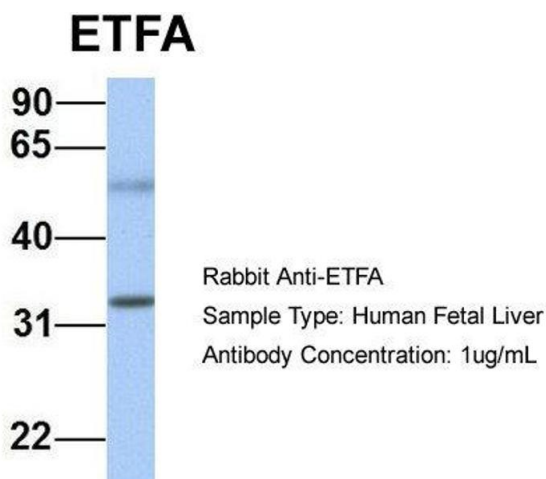
## Images



### Western Blotting

**Image 1. WB Suggested Anti-ETFA Antibody Titration:** 0.2-1 ug/ml

**Positive Control:** Human heart



### Western Blotting

**Image 2.** Host: Rabbit

Target Name: ETFA

Sample Tissue: Human Fetal Liver

Antibody Dilution: 1.0 µg/mL