

Datasheet for ABIN2785647

anti-LIG1 antibody (Middle Region)**2** Images[Go to Product page](#)

Overview

Quantity:	100 µL
Target:	LIG1
Binding Specificity:	Middle Region
Reactivity:	Human, Rat, Mouse, Cow, Rabbit, Dog, Horse, Pig
Host:	Rabbit
Clonality:	Polyclonal
Conjugate:	This LIG1 antibody is un-conjugated
Application:	Western Blotting (WB)

Product Details

Immunogen:	The immunogen is a synthetic peptide directed towards the middle region of human LIG1
Sequence:	PSVTSFILD T EAVAWDREKK QIQPFQVLTT RKRKEVDASE IQVQVCLYAF
Predicted Reactivity:	Cow: 92%, Dog: 92%, Horse: 92%, Human: 100%, Mouse: 100%, Pig: 92%, Rabbit: 85%, Rat: 100%
Characteristics:	This is a rabbit polyclonal antibody against LIG1. It was validated on Western Blot.
Purification:	Affinity Purified

Target Details

Target:	LIG1
Alternative Name:	LIG1 (LIG1 Products)
Background:	LIG1 is DNA ligase I, with functions in DNA replication and the base excision repair process.

Target Details

Mutations in LIG1 that lead to DNA ligase I deficiency result in immunodeficiency and increased sensitivity to DNA-damaging agents.

Alias Symbols: MGC117397, MGC130025

Protein Interaction Partner: PCNA, UBC, PRMT3, SUMO2, RGS2, TUBB3, MRE11A, INPP1, CSNK2A1,

Protein Size: 919

Molecular Weight: 102 kDa

Gene ID: 3978

NCBI Accession: [NM_000234](#), [NP_000225](#)

UniProt: [P18858](#)

Pathways: [Telomere Maintenance](#), [DNA Damage Repair](#), [DNA Replication](#), [Synthesis of DNA](#)

Application Details

Application Notes: Optimal working dilutions should be determined experimentally by the investigator.

Comment: Antigen size: 919 AA

Restrictions: For Research Use only

Handling

Format: Liquid

Concentration: Lot specific

Buffer: Liquid. Purified antibody supplied in 1x PBS buffer with 0.09 % (w/v) sodium azide and 2 % sucrose.

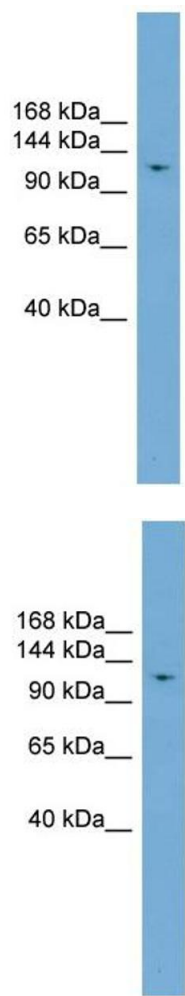
Preservative: Sodium azide

Precaution of Use: This product contains Sodium azide: a POISONOUS AND HAZARDOUS SUBSTANCE which should be handled by trained staff only.

Handling Advice: Avoid repeated freeze-thaw cycles.

Storage: -20 °C

Storage Comment: For short term use, store at 2-8°C up to 1 week. For long term storage, store at -20°C in small aliquots to prevent freeze-thaw cycles.



Western Blotting

Image 1. WB Suggested Anti-LIG1 Antibody Titration: 0.2-1 ug/ml

Positive Control: A549 cell lysate

Western Blotting

Image 2. WB Suggested Anti-LIG1

Antibody Titration: 0.2-1 µg/mL

Positive Control: A549 cell lysate

LIG1 is supported by BioGPS gene expression data to be expressed in A549