

Datasheet for ABIN2785648
anti-GCAP1 antibody (N-Term)



[Go to Product page](#)

1 Image

Overview

Quantity:	100 µL
Target:	GCAP1 (GUCA1A)
Binding Specificity:	N-Term
Reactivity:	Human, Mouse, Rat, Dog, Horse, Cow, Guinea Pig, Pig, Rabbit
Host:	Rabbit
Clonality:	Polyclonal
Conjugate:	This GCAP1 antibody is un-conjugated
Application:	Western Blotting (WB)

Product Details

Immunogen:	The immunogen is a synthetic peptide directed towards the N terminal region of human GUCA1A
Sequence:	LYEFRQFFGL KNLSPSASQY VEQMFETFDF NKDGYIDFME YVAALSLVLK
Predicted Reactivity:	Cow: 93%, Dog: 100%, Guinea Pig: 86%, Horse: 100%, Human: 100%, Mouse: 100%, Pig: 93%, Rabbit: 93%, Rat: 100%
Characteristics:	This is a rabbit polyclonal antibody against GUCA1A. It was validated on Western Blot using a cell lysate as a positive control.
Purification:	Affinity Purified

Target Details

Target:	GCAP1 (GUCA1A)
---------	----------------

Target Details

Alternative Name:	GUCA1A (GUCA1A Products)
Background:	<p>GUCA1A(GCAP1) plays a role in the recovery of retinal photoreceptors from photobleaching. In the recovery phase, the phototransduction messenger cGMP is replenished by retinal guanylyl cyclase-1 (GC1). GC1 is activated by decreasing Ca(2+) concentrations following photobleaching. The protein mediates the sensitivity of GC1 to Ca(2+) concentrations. GCAP1 promotes activity of GC1 at low Ca(2+) concentrations and inhibits GC1 activity at high Ca(2+) concentrations. Mutations in this gene cause autosomal dominant cone dystrophy (COD3), a disease characterized by reduced visual acuity associated with progressive loss of color vision. Mutations in this gene prohibit the inactivation of RetGC1 at high Ca(2+) concentrations, causing the constitutive activation of RetGC1 and, presumably, increased cell death. This gene is expressed in retina and spermatagonia.</p> <p>Alias Symbols: COD3, GCAP, GCAP1, GUCA, GUCA1, CORD14, C6orf131, dJ139D8.6</p> <p>Protein Interaction Partner: GUCY2D,</p> <p>Protein Size: 201</p>
Molecular Weight:	23 kDa
Gene ID:	2978
NCBI Accession:	NM_000409 , NP_000400
UniProt:	P43080
Pathways:	Regulation of G-Protein Coupled Receptor Protein Signaling , Phototransduction

Application Details

Application Notes:	Optimal working dilutions should be determined experimentally by the investigator.
Comment:	Antigen size: 201 AA
Restrictions:	For Research Use only

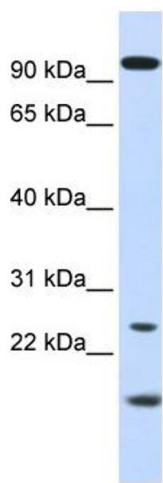
Handling

Format:	Liquid
Concentration:	Lot specific
Buffer:	Liquid. Purified antibody supplied in 1x PBS buffer with 0.09 % (w/v) sodium azide and 2 % sucrose.
Preservative:	Sodium azide

Handling

Precaution of Use:	This product contains Sodium azide: a POISONOUS AND HAZARDOUS SUBSTANCE which should be handled by trained staff only.
Handling Advice:	Avoid repeated freeze-thaw cycles.
Storage:	-20 °C
Storage Comment:	For short term use, store at 2-8°C up to 1 week. For long term storage, store at -20°C in small aliquots to prevent freeze-thaw cycles.

Images



Western Blotting

Image 1. WB Suggested Anti-GUCA1A Antibody Titration:

0.2-1 ug/ml

ELISA Titer: 1:62500

Positive Control: Human kidney