

Datasheet for ABIN2785664
anti-ALDH3B1 antibody (N-Term)



[Go to Product page](#)

1 Image

Overview

Quantity:	100 µL
Target:	ALDH3B1
Binding Specificity:	N-Term
Reactivity:	Human, Mouse, Rat, Cow, Dog, Horse, Guinea Pig
Host:	Rabbit
Clonality:	Polyclonal
Conjugate:	This ALDH3B1 antibody is un-conjugated
Application:	Western Blotting (WB)

Product Details

Immunogen:	The immunogen is a synthetic peptide directed towards the N terminal region of human ALDH3B1
Sequence:	DPLGDTLRRL REAFHAGRTR PAEFRAAQLQ GLGRFLQENK QLLHDALAQD
Predicted Reactivity:	Cow: 86%, Dog: 83%, Guinea Pig: 86%, Horse: 86%, Human: 100%, Mouse: 93%, Rat: 93%
Characteristics:	This is a rabbit polyclonal antibody against ALDH3B1. It was validated on Western Blot using a cell lysate as a positive control.
Purification:	Affinity Purified

Target Details

Target:	ALDH3B1
---------	---------

Target Details

Alternative Name:	ALDH3B1 (ALDH3B1 Products)
Background:	<p>The aldehyde dehydrogenases are a family of isozymes that may play a major role in the detoxification of aldehydes generated by alcohol metabolism and lipid peroxidation. ALDH3B1 is highly expressed in kidney and lung. The aldehyde dehydrogenases are a family of isozymes that may play a major role in the detoxification of aldehydes generated by alcohol metabolism and lipid peroxidation. This particular gene spans about 20 kb of genomic DNA and is composed of 9 coding exons. The gene encodes a single transcript of 2.8 kb which is highly expressed in kidney and lung. The functional significance of this gene as well as the cellular localization of its product are presently unknown. Two transcript variants encoding different isoforms have been found for this gene.</p> <p>Alias Symbols: ALDH4, ALDH7, FLJ26433</p> <p>Protein Interaction Partner: NOTCH2NL, KRTAP10-3, KRTAP10-8, KRTAP10-5, KRTAP10-9, KRTAP10-7, KRT40, KRTAP4-2, UBC, KRT31, BAG3, NOS2,</p> <p>Protein Size: 468</p>
Molecular Weight:	52 kDa
Gene ID:	221
NCBI Accession:	NM_000694 , NP_000685
UniProt:	P43353
Pathways:	Monocarboxylic Acid Catabolic Process

Application Details

Application Notes:	Optimal working dilutions should be determined experimentally by the investigator.
Comment:	Antigen size: 468 AA
Restrictions:	For Research Use only

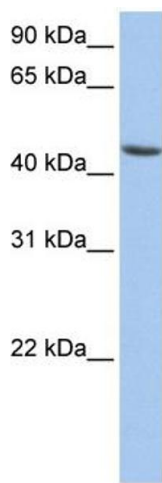
Handling

Format:	Liquid
Concentration:	Lot specific
Buffer:	Liquid. Purified antibody supplied in 1x PBS buffer with 0.09 % (w/v) sodium azide and 2 % sucrose.
Preservative:	Sodium azide

Handling

Precaution of Use:	This product contains Sodium azide: a POISONOUS AND HAZARDOUS SUBSTANCE which should be handled by trained staff only.
Handling Advice:	Avoid repeated freeze-thaw cycles.
Storage:	-20 °C
Storage Comment:	For short term use, store at 2-8°C up to 1 week. For long term storage, store at -20°C in small aliquots to prevent freeze-thaw cycles.

Images



Western Blotting

Image 1. WB Suggested Anti-ALDH3B1 Antibody Titration:
0.2-1 ug/ml
ELISA Titer: 1:62500
Positive Control: HepG2 cell lysate