

Datasheet for ABIN2785669  
**anti-GUK1 antibody (Middle Region)**



[Go to Product page](#)

1 Image

## Overview

Quantity:	100 µL
Target:	GUK1
Binding Specificity:	Middle Region
Reactivity:	Human, Mouse, Rat, Horse, Zebrafish (Danio rerio), Cow, Dog, Guinea Pig, Rabbit, Saccharomyces cerevisiae
Host:	Rabbit
Clonality:	Polyclonal
Conjugate:	This GUK1 antibody is un-conjugated
Application:	Western Blotting (WB)

## Product Details

Immunogen:	The immunogen is a synthetic peptide directed towards the middle region of human GUK1
Sequence:	IEHAEFSGNL YGTSKVAVQA VQAMNRCVL DVDLQGVRNI KATDLRPIYI
Predicted Reactivity:	Cow: 100%, Dog: 100%, Guinea Pig: 100%, Horse: 100%, Human: 100%, Mouse: 100%, Rabbit: 100%, Rat: 100%, Yeast: 92%, Zebrafish: 86%
Characteristics:	This is a rabbit polyclonal antibody against GUK1. It was validated on Western Blot using a cell lysate as a positive control.
Purification:	Affinity Purified

## Target Details

Target:	GUK1
---------	------

### Target Details

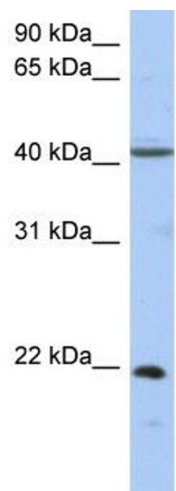
Alternative Name:	GUK1 ( <a href="#">GUK1 Products</a> )
Background:	GUK1 is essential for recycling GMP and indirectly, cGMP. Alias Symbols: GMK Protein Interaction Partner: UBC, HNRNPD, IQCB1, Protein Size: 197
Molecular Weight:	22 kDa
Gene ID:	2987
NCBI Accession:	<a href="#">NM_000858</a> , <a href="#">NP_000849</a>
UniProt:	<a href="#">Q16774</a>
Pathways:	<a href="#">Nucleotide Phosphorylation</a> , <a href="#">ER-Nucleus Signaling</a> , <a href="#">Ribonucleoside Biosynthetic Process</a>

### Application Details

Application Notes:	Optimal working dilutions should be determined experimentally by the investigator.
Comment:	Antigen size: 197 AA
Restrictions:	For Research Use only

### Handling

Format:	Liquid
Concentration:	Lot specific
Buffer:	Liquid. Purified antibody supplied in 1x PBS buffer with 0.09 % (w/v) sodium azide and 2 % sucrose.
Preservative:	Sodium azide
Precaution of Use:	This product contains Sodium azide: a POISONOUS AND HAZARDOUS SUBSTANCE which should be handled by trained staff only.
Handling Advice:	Avoid repeated freeze-thaw cycles.
Storage:	-20 °C
Storage Comment:	For short term use, store at 2-8°C up to 1 week. For long term storage, store at -20°C in small aliquots to prevent freeze-thaw cycles.



Western Blotting

**Image 1. WB Suggested Anti-GUK1 Antibody Titration:**

0.2-1 ug/ml

**ELISA Titer:** 1:62500

**Positive Control:** Human kidney