



Datasheet for ABIN2785679
anti-NCCRP1 antibody (N-Term)



[Go to Product page](#)

2 Images

Overview

Quantity:	100 µL
Target:	NCCRP1
Binding Specificity:	N-Term
Reactivity:	Human
Host:	Rabbit
Clonality:	Polyclonal
Conjugate:	This NCCRP1 antibody is un-conjugated
Application:	Western Blotting (WB)

Product Details

Immunogen:	The immunogen is a synthetic peptide directed towards the N terminal region of human LOC342897
Sequence:	MEEVREGHAL GGGMEADGPA SLQELPPSPR SPSPPPSPPP LPSPPSLPSP
Predicted Reactivity:	Human: 100%
Characteristics:	This is a rabbit polyclonal antibody against LOC342897. It was validated on Western Blot using a cell lysate as a positive control.
Purification:	Affinity Purified

Target Details

Target:	NCCRP1
---------	--------

Target Details

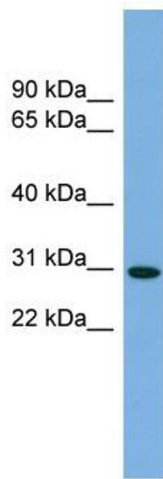
Alternative Name:	NCCRP1 (NCCRP1 Products)
Background:	The function of this protein remains unknown. Alias Symbols: FBXO50, NCCRP-1 Protein Interaction Partner: ESR1, ELAVL1, UBC, Protein Size: 275
Molecular Weight:	31 kDa
Gene ID:	342897
NCBI Accession:	NM_001001414 , NP_001001414
UniProt:	Q6ZVX7

Application Details

Application Notes:	Optimal working dilutions should be determined experimentally by the investigator.
Comment:	Antigen size: 275 AA
Restrictions:	For Research Use only

Handling

Format:	Liquid
Concentration:	Lot specific
Buffer:	Liquid. Purified antibody supplied in 1x PBS buffer with 0.09 % (w/v) sodium azide and 2 % sucrose.
Preservative:	Sodium azide
Precaution of Use:	This product contains Sodium azide: a POISONOUS AND HAZARDOUS SUBSTANCE which should be handled by trained staff only.
Handling Advice:	Avoid repeated freeze-thaw cycles.
Storage:	-20 °C
Storage Comment:	For short term use, store at 2-8°C up to 1 week. For long term storage, store at -20°C in small aliquots to prevent freeze-thaw cycles.

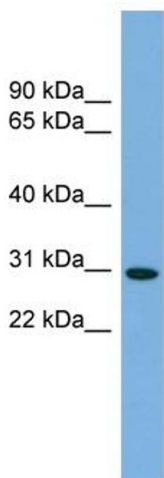


Western Blotting

Image 1. WB Suggested Anti-NCCRP1 Antibody Titration:

0.2-1 ug/ml

Positive Control: 293T cell lysate



Rabbit Anti-LOC342897 Antibody
Catalog Number: ARP54371
Lot Number: QC29024
Lane: 293T Cell Lysate

Antibody Titration: 1.0µg/ml
Gel Concentration: 12%

Western Blotting

Image 2. WB Suggested Anti-NCCRP1

Antibody Titration: 0.2-1 µg/mL

Positive Control: 293T cell lysate