



[Go to Product page](#)

Datasheet for ABIN2785700
anti-CENPP antibody (N-Term)

1 Image

Overview

Quantity:	100 µL
Target:	CENPP
Binding Specificity:	N-Term
Reactivity:	Human, Horse
Host:	Rabbit
Clonality:	Polyclonal
Conjugate:	This CENPP antibody is un-conjugated
Application:	Western Blotting (WB)

Product Details

Immunogen:	The immunogen is a synthetic peptide directed towards the N terminal region of human CENPP
Sequence:	VQKSFQAIHQ FNLEGWKSSK DLKNQLGHLE SELSFLSTLT GINIRNHSKQ
Predicted Reactivity:	Horse: 77%, Human: 100%
Characteristics:	This is a rabbit polyclonal antibody against CENPP. It was validated on Western Blot using a cell lysate as a positive control.
Purification:	Affinity Purified

Target Details

Target:	CENPP
Alternative Name:	CENPP (CENPP Products)

Target Details

Background: CENPP is the component of the CENPA-CAD (nucleosome distal) complex, a complex recruited to centromeres which is involved in assembly of kinetochore proteins, mitotic progression and chromosome segregation. CENPP may be involved in incorporation of newly synthesized CENPA into centromeres via its interaction with the CENPA-NAC complex. CENPP is a subunit of a CENPH (MIM 605607)-CENPI (MIM 300065)-associated centromeric complex that targets CENPA (MIM 117139) to centromeres and is required for proper kinetochore function and mitotic progression (Okada et al., 2006 [PubMed 16622420]). [supplied by OMIM].

PRIMARYREFSEQ_SPAN PRIMARY_IDENTIFIER PRIMARY_SPAN COMP 1-1104 CR592049.1 1-1104 1105-1633 BC071726.1 622-1150 1634-1689 BX537851.1 972-1027 1690-3411 AK091247.1 839-2560 3412-3428 AL833701.1 3078-3094

Alias Symbols: CENP-P, FLJ33928, RP11-19J3.3

Protein Interaction Partner: KLC3, ZNF341, USHBP1, CCDC33, CENPO, TEX11, RPIA, NHLH1, GOLGA2, CENPU, CENPM, CENPN, CENPH, CENPQ, ITGB3BP, CENPI, UBC,

Protein Size: 288

Molecular Weight: 33 kDa

Gene ID: 401541

NCBI Accession: [NM_001012267](#), [NP_001012267](#)

UniProt: [Q6IPU0](#)

Application Details

Application Notes: Optimal working dilutions should be determined experimentally by the investigator.

Comment: Antigen size: 288 AA

Restrictions: For Research Use only

Handling

Format: Liquid

Concentration: Lot specific

Buffer: Liquid. Purified antibody supplied in 1x PBS buffer with 0.09 % (w/v) sodium azide and 2 % sucrose.

Preservative: Sodium azide

Precaution of Use: This product contains Sodium azide: a POISONOUS AND HAZARDOUS SUBSTANCE which

Handling

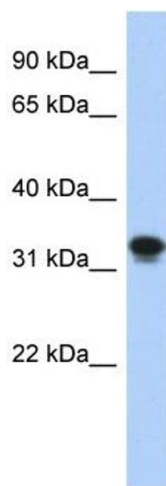
should be handled by trained staff only.

Handling Advice: Avoid repeated freeze-thaw cycles.

Storage: -20 °C

Storage Comment: For short term use, store at 2-8°C up to 1 week. For long term storage, store at -20°C in small aliquots to prevent freeze-thaw cycles.

Images



Western Blotting

Image 1. WB Suggested Anti-CENPP Antibody Titration:

0.2-1 ug/ml

ELISA Titer: 1:312500

Positive Control: Transfected 293T