

Datasheet for ABIN2785702
anti-CENPW antibody (N-Term)



[Go to Product page](#)

1 Image

Overview

Quantity:	100 µL
Target:	CENPW
Binding Specificity:	N-Term
Reactivity:	Human, Guinea Pig, Horse
Host:	Rabbit
Clonality:	Polyclonal
Conjugate:	This CENPW antibody is un-conjugated
Application:	Western Blotting (WB)

Product Details

Immunogen:	The immunogen is a synthetic peptide directed towards the N terminal region of human C6orf173
Sequence:	ALSTIVSQRK QIKRKAPRGF LKRVFKRKKP QLRLEKSGDL LVHLNCLLFV
Predicted Reactivity:	Guinea Pig: 77%, Horse: 79%, Human: 100%
Characteristics:	This is a rabbit polyclonal antibody against C6orf173. It was validated on Western Blot using a cell lysate as a positive control.
Purification:	Affinity Purified

Target Details

Target:	CENPW
---------	-------

Target Details

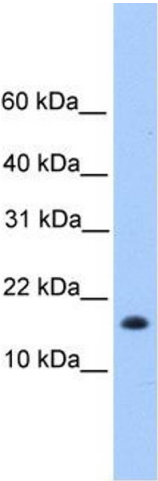
Alternative Name:	C6orf173 (CENPW Products)
Background:	<p>C6orf173 is up-regulated in many cancer tissues. It suggests that C6orf173 may act as an oncogene.</p> <p>Alias Symbols: CUG2, DKFZp686L1553, C6orf173</p> <p>Protein Interaction Partner: CENPT, COPS5, UBC,</p> <p>Protein Size: 88</p>
Molecular Weight:	10 kDa
Gene ID:	387103
NCBI Accession:	NM_001012507 , NP_001012525
UniProt:	Q5EE01

Application Details

Application Notes:	Optimal working dilutions should be determined experimentally by the investigator.
Comment:	Antigen size: 88 AA
Restrictions:	For Research Use only

Handling

Format:	Liquid
Concentration:	Lot specific
Buffer:	Liquid. Purified antibody supplied in 1x PBS buffer with 0.09 % (w/v) sodium azide and 2 % sucrose.
Preservative:	Sodium azide
Precaution of Use:	This product contains Sodium azide: a POISONOUS AND HAZARDOUS SUBSTANCE which should be handled by trained staff only.
Handling Advice:	Avoid repeated freeze-thaw cycles.
Storage:	-20 °C
Storage Comment:	For short term use, store at 2-8°C up to 1 week. For long term storage, store at -20°C in small aliquots to prevent freeze-thaw cycles.



Western Blotting				
Image	1.	WB	Suggested	Anti-C6orf173 Antibody
Titration: 0.2-1 ug/ml				
Positive Control: Hela cell lysate				