

Datasheet for ABIN2785707

## anti-C12ORF68 antibody (Middle Region)



[Go to Product page](#)

1 Image

1 Publication

### Overview

Quantity:	100 µL
Target:	C12ORF68 (C12orf68)
Binding Specificity:	Middle Region
Reactivity:	Human, Mouse, Rat, Cow, Dog, Guinea Pig, Horse, Rabbit
Host:	Rabbit
Clonality:	Polyclonal
Conjugate:	This C12ORF68 antibody is un-conjugated
Application:	Western Blotting (WB)

### Product Details

Immunogen:	The immunogen is a synthetic peptide directed towards the middle region of human LOC387856
Sequence:	LQALFEDVRA MRGALDEQAS HIQVLSDDVC ANQRAIVSMC QIMTTAPRQG
Predicted Reactivity:	Cow: 93%, Dog: 93%, Guinea Pig: 93%, Horse: 93%, Human: 93%, Mouse: 93%, Rabbit: 93%, Rat: 93%
Characteristics:	This is a rabbit polyclonal antibody against LOC387856. It was validated on Western Blot using a cell lysate as a positive control.
Purification:	Affinity Purified

### Target Details

Target:	C12ORF68 (C12orf68)
---------	---------------------

### Target Details

Alternative Name:	C12orf68 ( <a href="#">C12orf68 Products</a> )
Background:	<p>The exact function of LOC387856 remains unknown.</p> <p>Alias Symbols: -</p> <p>Protein Interaction Partner: PBLD, WDYHV1, PPP1R13B, STX11, GPANK1, TRAF5, RPL9, PIN1, CUL5,</p> <p>Protein Size: 194</p>
Molecular Weight:	20 kDa
Gene ID:	387856
NCBI Accession:	<a href="#">NM_001013635</a> , <a href="#">NP_001013657</a>
UniProt:	<a href="#">Q52MB2</a>

### Application Details

Application Notes:	Optimal working dilutions should be determined experimentally by the investigator.
Comment:	Antigen size: 194 AA
Restrictions:	For Research Use only

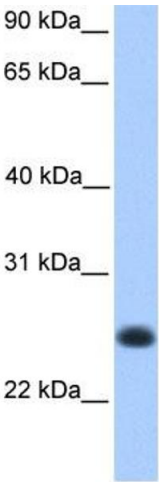
### Handling

Format:	Liquid
Concentration:	Lot specific
Buffer:	Liquid. Purified antibody supplied in 1x PBS buffer with 0.09 % (w/v) sodium azide and 2 % sucrose.
Preservative:	Sodium azide
Precaution of Use:	This product contains Sodium azide: a POISONOUS AND HAZARDOUS SUBSTANCE which should be handled by trained staff only.
Handling Advice:	Avoid repeated freeze-thaw cycles.
Storage:	-20 °C
Storage Comment:	For short term use, store at 2-8°C up to 1 week. For long term storage, store at -20°C in small aliquots to prevent freeze-thaw cycles.

Publications

Product cited in: Mehrle, Rosenfelder, Schupp, del Val, Arlt, Hahne, Bechtel, Simpson, Hofmann, Hide, Glatting, Huber, Pepperkok, Poustka, Wiemann: "The LIFEdb database in 2006." in: **Nucleic acids research**, Vol. 34, Issue Database issue, pp. D415-8, (2005) ([PubMed](#)).

Images



Western Blotting

Image 1. WB Suggested Anti-C12orf68 Antibody Titration:  
0.2-1 ug/ml  
**Positive Control:** Human Muscle