

Datasheet for ABIN2785720
anti-SH3KBP1 antibody (N-Term)[Go to Product page](#)

2 Images

Overview

Quantity:	100 µL
Target:	SH3KBP1
Binding Specificity:	N-Term
Reactivity:	Human, Mouse, Rat, Rabbit, Dog, Cow, Guinea Pig, Horse, Zebrafish (Danio rerio)
Host:	Rabbit
Clonality:	Polyclonal
Conjugate:	This SH3KBP1 antibody is un-conjugated
Application:	Western Blotting (WB), Immunohistochemistry (IHC)

Product Details

Immunogen:	The immunogen is a synthetic peptide directed towards the N terminal region of human SH3KBP1
Sequence:	TGMFPSNFIK ELSGEDELG ISQDEQLSKS SLRETTGSES DGGDSSSTKS
Predicted Reactivity:	Cow: 100%, Dog: 100%, Guinea Pig: 100%, Horse: 100%, Human: 100%, Mouse: 100%, Rabbit: 100%, Rat: 100%, Zebrafish: 85%
Characteristics:	This is a rabbit polyclonal antibody against SH3KBP1. It was validated on Western Blot using a cell lysate as a positive control.
Purification:	Affinity Purified

Target Details

Target:	SH3KBP1
---------	---------

Target Details

Alternative Name:	SH3KBP1 (SH3KBP1 Products)
Background:	<p>This gene encodes an adapter protein that contains three N-terminal Src homology domains, a proline rich region and a C-terminal coiled-coil domain. The encoded protein facilitates protein-protein interactions and has been implicated in numerous cellular processes including apoptosis, cytoskeletal rearrangement, cell adhesion and in the regulation of clathrin-dependent endocytosis. Alternate splicing results in multiple transcript variants.</p> <p>Alias Symbols: CIN85, GIG10, MIG18, HSB1, HSB-1, CD2BP3</p> <p>Protein Interaction Partner: PNMA5, ZBTB7B, SH3KBP1, STAP1, FRS3, SPRY2, ASAP2, PSMA3, CBL, UBC, RAF1, LOX, INPP5D, Dlg4, FAP, ARHGAP17, Ap2a1, Irf2bp1, Gcdh, Sept7, Wipf1, Chtf8, Cblb, Shkbp1, Rtkn2, Idh3b, Pik3ap1, Slc25a12, Wasl, Ap2b1, Arap1, Far1, Cltc, Timm50, Actn4, Sept6, Net</p> <p>Protein Size: 628</p>
Molecular Weight:	68 kDa
Gene ID:	30011
NCBI Accession:	NM_001024666 , NP_001019837
UniProt:	Q5JPT5
Pathways:	EGFR Signaling Pathway , EGFR Downregulation

Application Details

Application Notes:	Optimal working dilutions should be determined experimentally by the investigator.
Comment:	Antigen size: 628 AA
Restrictions:	For Research Use only

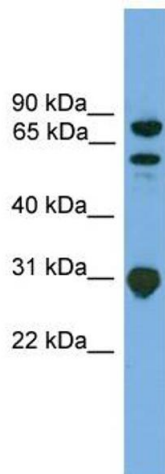
Handling

Format:	Liquid
Concentration:	Lot specific
Buffer:	Liquid. Purified antibody supplied in 1x PBS buffer with 0.09 % (w/v) sodium azide and 2 % sucrose.
Preservative:	Sodium azide
Precaution of Use:	This product contains Sodium azide: a POISONOUS AND HAZARDOUS SUBSTANCE which should be handled by trained staff only.

Handling

Handling Advice:	Avoid repeated freeze-thaw cycles.
Storage:	-20 °C
Storage Comment:	For short term use, store at 2-8°C up to 1 week. For long term storage, store at -20°C in small aliquots to prevent freeze-thaw cycles.

Images



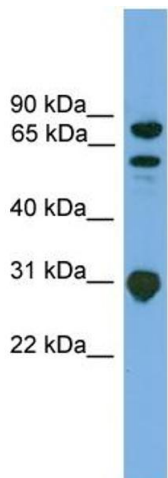
Western Blotting

Image 1. WB Suggested Anti-SH3KBP1 Antibody Titration:

0.2-1 ug/ml

ELISA Titer: 1:312500

Positive Control: Jurkat cell lysate



Rabbit Anti-SH3KBP1 Antibody
Catalog Number: ARP54453
Lot Number: QC29039
Lane: Jurkat Cell Lysate

Antibody Titration: 1.0µg/ml
Gel Concentration: 12%

Western Blotting

Image 2. WB Suggested Anti-SH3KBP1

Antibody Titration: 0.2-1 µg/mL ELISA Titer: 1:12500

Positive Control: Jurkat cell lysate