

Datasheet for ABIN2785721
anti-SH3KBP1 antibody (C-Term)



[Go to Product page](#)

1 Image

Overview

Quantity:	100 µL
Target:	SH3KBP1
Binding Specificity:	C-Term
Reactivity:	Human, Mouse, Rat, Rabbit, Cow, Dog, Guinea Pig, Horse, Goat
Host:	Rabbit
Clonality:	Polyclonal
Conjugate:	This SH3KBP1 antibody is un-conjugated
Application:	Western Blotting (WB)

Product Details

Immunogen:	The immunogen is a synthetic peptide directed towards the C-terminal region of Rat Sh3kbp1
Sequence:	QSLTSSSLSS PDIFDSPSPE EDKEEHISLA HRGIDVSKKT SRTVTISQVS
Predicted Reactivity:	Cow: 93%, Dog: 93%, Goat: 80%, Guinea Pig: 100%, Horse: 79%, Human: 100%, Mouse: 100%, Rabbit: 100%, Rat: 100%
Characteristics:	This is a rabbit polyclonal antibody against Sh3kbp1. It was validated on Western Blot.
Purification:	Affinity Purified

Target Details

Target:	SH3KBP1
Alternative Name:	Sh3kbp1 (SH3KBP1 Products)

Target Details

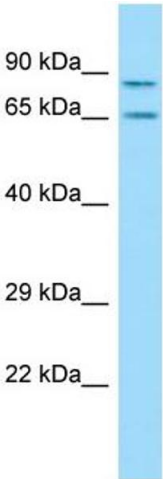
Background:	Sh3kbp1 binds apoptosis-linked gene 2 (ALG-2) interacting protein 1, involved in regulation of apoptosis in astrocytes. Alias Symbols: Seta Protein Interaction Partner: Sh3kbp1, Protein Size: 665
Molecular Weight:	73 kDa
Gene ID:	84357
NCBI Accession:	NM_053360 , NP_445812
UniProt:	Q6IRL5
Pathways:	EGFR Signaling Pathway , EGFR Downregulation

Application Details

Application Notes:	Optimal working dilutions should be determined experimentally by the investigator.
Comment:	Antigen size: 665 AA
Restrictions:	For Research Use only

Handling

Format:	Liquid
Concentration:	Lot specific
Buffer:	Liquid. Purified antibody supplied in 1x PBS buffer with 0.09 % (w/v) sodium azide and 2 % sucrose.
Preservative:	Sodium azide
Precaution of Use:	This product contains Sodium azide: a POISONOUS AND HAZARDOUS SUBSTANCE which should be handled by trained staff only.
Handling Advice:	Avoid repeated freeze-thaw cycles.
Storage:	-20 °C
Storage Comment:	For short term use, store at 2-8°C up to 1 week. For long term storage, store at -20°C in small aliquots to prevent freeze-thaw cycles.



Western Blotting

Image 1. WB Suggested Anti-Sh3kbp1 Antibody Titration:
1.0 ug/ml Positive Control: Rat Thymus