

Datasheet for ABIN2785727

**anti-KCTD21 antibody (N-Term)**[Go to Product page](#)**1** Image**1** Publication

## Overview

Quantity:	100 µL
Target:	KCTD21
Binding Specificity:	N-Term
Reactivity:	Human, Mouse, Rat, Cow, Dog, Guinea Pig, Horse, Rabbit, Goat
Host:	Rabbit
Clonality:	Polyclonal
Conjugate:	This KCTD21 antibody is un-conjugated
Application:	Western Blotting (WB)

## Product Details

Immunogen:	The immunogen is a synthetic peptide directed towards the N terminal region of human KCTD21
Sequence:	RDGKVFYRIL NFLRTSHLDL PEDFQEMGLL RREADFYQVQ PLIEALQEKE
Predicted Reactivity:	Cow: 100%, Dog: 100%, Goat: 93%, Guinea Pig: 100%, Horse: 100%, Human: 100%, Mouse: 100%, Rabbit: 100%, Rat: 100%
Characteristics:	This is a rabbit polyclonal antibody against KCTD21. It was validated on Western Blot using a cell lysate as a positive control.
Purification:	Affinity Purified

## Target Details

Target:	KCTD21
---------	--------

## Target Details

Alternative Name:	KCTD21 ( <a href="#">KCTD21 Products</a> )
Background:	KCTD21 contains 1 BTB (POZ) domain. The exact function of KCTD21 remains unknown. Alias Symbols: KCASH2 Protein Interaction Partner: CUL3, Protein Size: 260
Molecular Weight:	30 kDa
Gene ID:	283219
NCBI Accession:	<a href="#">NM_001029859</a> , <a href="#">NP_001025030</a>
UniProt:	<a href="#">Q4G0X4</a>

## Application Details

Application Notes:	Optimal working dilutions should be determined experimentally by the investigator.
Comment:	Antigen size: 260 AA
Restrictions:	For Research Use only

## Handling

Format:	Liquid
Concentration:	Lot specific
Buffer:	Liquid. Purified antibody supplied in 1x PBS buffer with 0.09 % (w/v) sodium azide and 2 % sucrose.
Preservative:	Sodium azide
Precaution of Use:	This product contains Sodium azide: a POISONOUS AND HAZARDOUS SUBSTANCE which should be handled by trained staff only.
Handling Advice:	Avoid repeated freeze-thaw cycles.
Storage:	-20 °C
Storage Comment:	For short term use, store at 2-8°C up to 1 week. For long term storage, store at -20°C in small aliquots to prevent freeze-thaw cycles.

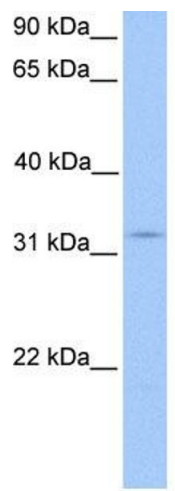
## Publications

Product cited in:	Gerhard, Wagner, Feingold, Shenmen, Grouse, Schuler, Klein, Old, Rasooly, Good, Guyer, Peck,
-------------------	--

Publications

Derge, Lipman, Collins, Jang, Sherry, Feolo, Misquitta, Lee, Rotmistrovsky, Greenhut, Schaefer, Buetow et al.: "The status, quality, and expansion of the NIH full-length cDNA project: the Mammalian Gene Collection (MGC). ..." in: **Genome research**, Vol. 14, Issue 10B, pp. 2121-7, (2004) ([PubMed](#)).

Images



**Western Blotting**

**Image 1. WB Suggested Anti-KCTD21 Antibody Titration:**  
0.2-1 ug/ml

**Positive Control:** Human brain