

Datasheet for ABIN2785752
anti-TRAK1 antibody (Middle Region)[Go to Product page](#)

2 Images

Overview

Quantity:	100 µL
Target:	TRAK1
Binding Specificity:	Middle Region
Reactivity:	Human, Rat, Dog, Rabbit, Horse, Cow, Pig
Host:	Rabbit
Clonality:	Polyclonal
Conjugate:	This TRAK1 antibody is un-conjugated
Application:	Western Blotting (WB)

Product Details

Immunogen:	The immunogen is a synthetic peptide directed towards the middle region of human TRAK1
Sequence:	ILETEAADLG NDERSKKPGT PGTPGSHDLE TALRRLSLRR ENYLSERRFF
Predicted Reactivity:	Cow: 93%, Dog: 93%, Horse: 93%, Human: 100%, Pig: 93%, Rabbit: 83%, Rat: 79%
Characteristics:	This is a rabbit polyclonal antibody against TRAK1. It was validated on Western Blot using a cell lysate as a positive control.
Purification:	Affinity Purified

Target Details

Target:	TRAK1
Alternative Name:	TRAK1 (TRAK1 Products)

Target Details

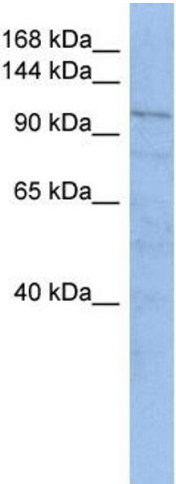
Background:	The specific function of the protein remains unknown. Alias Symbols: OIP106, MILT1 Protein Interaction Partner: SKIL, CDK6, HGS, TRAF3IP1, CDC5L, TRAK1, POLR2A, OGT, TRAK2, KIF5B, KIF5C, Protein Size: 953
Molecular Weight:	106 kDa
Gene ID:	22906
NCBI Accession:	NM_001042646 , NP_001036111
UniProt:	Q9UPV9

Application Details

Application Notes:	Optimal working dilutions should be determined experimentally by the investigator.
Comment:	Antigen size: 953 AA
Restrictions:	For Research Use only

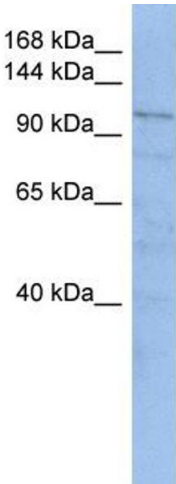
Handling

Format:	Liquid
Concentration:	Lot specific
Buffer:	Liquid. Purified antibody supplied in 1x PBS buffer with 0.09 % (w/v) sodium azide and 2 % sucrose.
Preservative:	Sodium azide
Precaution of Use:	This product contains Sodium azide: a POISONOUS AND HAZARDOUS SUBSTANCE which should be handled by trained staff only.
Handling Advice:	Avoid repeated freeze-thaw cycles.
Storage:	-20 °C
Storage Comment:	For short term use, store at 2-8°C up to 1 week. For long term storage, store at -20°C in small aliquots to prevent freeze-thaw cycles.



Western Blotting

Image 1. WB Suggested Anti-TRAK1 Antibody Titration:
0.2-1 ug/ml
ELISA Titer: 1:1562500
Positive Control: HT1080 cell lysate



Western Blotting

Image 2. WB Suggested Anti-TRAK1
Antibody Titration: 0.2-1 µg/mL ELISA Titer: 1:1562500
Positive Control: HT1080 cell lysate
There is BioGPS gene expression data showing that TRAK1 is expressed in HT1080