



Datasheet for ABIN2785763

## anti-C12orf42 antibody (N-Term)



[Go to Product page](#)

1 Image

1 Publication

### Overview

Quantity:	100 µL
Target:	C12orf42
Binding Specificity:	N-Term
Reactivity:	Human
Host:	Rabbit
Clonality:	Polyclonal
Conjugate:	This C12orf42 antibody is un-conjugated
Application:	Western Blotting (WB)

### Product Details

Immunogen:	The immunogen is a synthetic peptide directed towards the N terminal region of human C12orf42
Sequence:	PRCSVSTVSF DEESYEEFRS SPAPSSETDE APLIFTARGE TEERARGAPK
Predicted Reactivity:	Human: 100%
Characteristics:	This is a rabbit polyclonal antibody against C12orf42. It was validated on Western Blot using a cell lysate as a positive control.
Purification:	Affinity Purified

### Target Details

Target:	C12orf42
---------	----------

## Target Details

---

Alternative Name:	C12orf42 ( <a href="#">C12orf42 Products</a> )
Background:	The exact function of C12orf42 remains unknown. Alias Symbols: FLJ25323, MGC43592, MGC57409 Protein Size: 360
Molecular Weight:	40 kDa
Gene ID:	374470
NCBI Accession:	<a href="#">NM_001099336</a> , <a href="#">NP_001092806</a>
UniProt:	<a href="#">Q96LP6</a>

## Application Details

---

Application Notes:	Optimal working dilutions should be determined experimentally by the investigator.
Comment:	Antigen size: 360 AA
Restrictions:	For Research Use only

## Handling

---

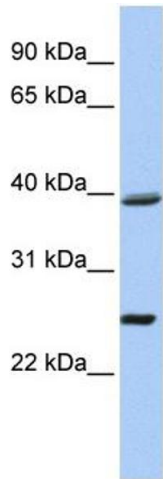
Format:	Liquid
Concentration:	Lot specific
Buffer:	Liquid. Purified antibody supplied in 1x PBS buffer with 0.09 % (w/v) sodium azide and 2 % sucrose.
Preservative:	Sodium azide
Precaution of Use:	This product contains Sodium azide: a POISONOUS AND HAZARDOUS SUBSTANCE which should be handled by trained staff only.
Handling Advice:	Avoid repeated freeze-thaw cycles.
Storage:	-20 °C
Storage Comment:	For short term use, store at 2-8°C up to 1 week. For long term storage, store at -20°C in small aliquots to prevent freeze-thaw cycles.

## Publications

---

Product cited in:	Ueda, Nagae, Kozawa, Morishita, Kimura, Nagase, Ohara, Yoshida, Asano: "Heterotrimeric G protein betagamma subunits stimulate FLJ00018, a guanine nucleotide exchange factor for
-------------------	--

Rac1 and Cdc42." in: **The Journal of biological chemistry**, Vol. 283, Issue 4, pp. 1946-53, (2008)  
([PubMed](#)).



#### Western Blotting

##### Image 1. WB Suggested Anti-C12orf42 Antibody Titration:

0.2-1 ug/ml

**Positive Control:** 721\_B cell lysate