

Datasheet for ABIN2785765  
**anti-MMD2 antibody (N-Term)**[Go to Product page](#)

## 1 Image

## Overview

Quantity:	100 µL
Target:	MMD2
Binding Specificity:	N-Term
Reactivity:	Human, Mouse, Cow, Horse, Rabbit, Dog, Rat, Pig, Zebrafish (Danio rerio), Guinea Pig
Host:	Rabbit
Clonality:	Polyclonal
Conjugate:	This MMD2 antibody is un-conjugated
Application:	Western Blotting (WB)

## Product Details

Immunogen:	The immunogen is a synthetic peptide directed towards the N terminal region of human MMD2
Sequence:	FAPRLLDLFQK TKYARFMNHR VPAHKRYQPT EYEHAANCAT HAFWIIPSIL
Predicted Reactivity:	Cow: 100%, Dog: 100%, Guinea Pig: 93%, Horse: 100%, Human: 100%, Mouse: 93%, Pig: 100%, Rabbit: 100%, Rat: 100%, Zebrafish: 79%
Characteristics:	This is a rabbit polyclonal antibody against MMD2. It was validated on Western Blot using a cell lysate as a positive control.
Purification:	Affinity Purified

## Target Details

Target:	MMD2
---------	------

## Target Details

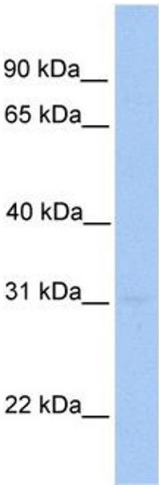
Alternative Name:	MMD2 ( <a href="#">MMD2 Products</a> )
Background:	MMD2 contains 1 COMM domain. The exact function of MMD2 remains unknown. Alias Symbols: FLJ37205, PAQR10 Protein Size: 270
Molecular Weight:	31 kDa
Gene ID:	221938
NCBI Accession:	<a href="#">NM_001100600</a> , <a href="#">NP_001094070</a>
UniProt:	<a href="#">Q8IY49</a>

## Application Details

Application Notes:	Optimal working dilutions should be determined experimentally by the investigator.
Comment:	Antigen size: 270 AA
Restrictions:	For Research Use only

## Handling

Format:	Liquid
Concentration:	Lot specific
Buffer:	Liquid. Purified antibody supplied in 1x PBS buffer with 0.09 % (w/v) sodium azide and 2 % sucrose.
Preservative:	Sodium azide
Precaution of Use:	This product contains Sodium azide: a POISONOUS AND HAZARDOUS SUBSTANCE which should be handled by trained staff only.
Handling Advice:	Avoid repeated freeze-thaw cycles.
Storage:	-20 °C
Storage Comment:	For short term use, store at 2-8°C up to 1 week. For long term storage, store at -20°C in small aliquots to prevent freeze-thaw cycles.



**Western Blotting**

**Image 1. WB Suggested Anti-MMD2 Antibody Titration:**  
0.2-1 ug/ml

**Positive Control:** Human brain