

Datasheet for ABIN2785767
anti-RRAS2 antibody (C-Term)[Go to Product page](#)

1 Image

Overview

Quantity:	100 µL
Target:	RRAS2
Binding Specificity:	C-Term
Reactivity:	Human, Mouse, Rat, Cow, Dog, Guinea Pig, Horse, Rabbit, Zebrafish (Danio rerio)
Host:	Rabbit
Clonality:	Polyclonal
Conjugate:	This RRAS2 antibody is un-conjugated
Application:	Western Blotting (WB)

Product Details

Immunogen:	The immunogen is a synthetic peptide directed towards the C-terminal region of Human RRAS2
Sequence:	EASAKIRMNV DQAFHELVRV IRKFQEQECP PSPEPTRKEK DKKGCHCVIF
Predicted Reactivity:	Cow: 100%, Dog: 100%, Guinea Pig: 100%, Horse: 100%, Human: 100%, Mouse: 100%, Rabbit: 100%, Rat: 100%, Zebrafish: 100%
Characteristics:	This is a rabbit polyclonal antibody against RRAS2. It was validated on Western Blot.
Purification:	Affinity Purified

Target Details

Target:	RRAS2
Alternative Name:	RRAS2 (RRAS2 Products)

Target Details

Background:	<p>This gene encodes a member of the R-Ras subfamily of Ras-like small GTPases. The encoded protein associates with the plasma membrane and may function as a signal transducer. This protein may play an important role in activating signal transduction pathways that control cell proliferation. Mutations in this gene are associated with the growth of certain tumors.</p> <p>Pseudogenes of this gene are found on chromosomes 1 and 2. Alternate splicing results in multiple transcript variants.</p> <p>Alias Symbols: TC21</p> <p>Protein Interaction Partner: ARAF, PAN2, CREB3, RIN1, UBC, TRAF2, RALGDS, CDK2, Tubb4b, Trim69, RASIP1, ARHGEF2, PAWR, RASGRF1, RAPGEF4, RAPGEF3, SMURF2, RASSF5, RABAC1, BMPR1B, SMAD3, LGALS4, PGGT1B, TRAF3, SMAD4, RAPGEF1, PTPN1, PIK3R1, RAF1, MLLT4, XRCC6, AHSG, FNTB, ACVR1,</p> <p>Protein Size: 204</p>
Molecular Weight:	22 kDa
Gene ID:	22800
NCBI Accession:	NM_012250 , NP_036382
UniProt:	P62070

Application Details

Application Notes:	Optimal working dilution should be determined by the investigator.
Restrictions:	For Research Use only

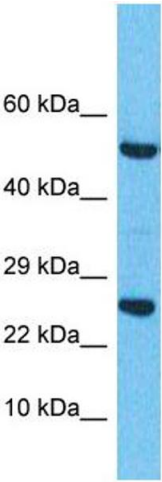
Handling

Format:	Liquid
Concentration:	1 mg/mL
Buffer:	Liquid. Purified antibody supplied in 1x PBS buffer with 0.09 % (w/v) sodium azide and 2 % sucrose.
Preservative:	Sodium azide
Precaution of Use:	This product contains Sodium azide: a POISONOUS AND HAZARDOUS SUBSTANCE which should be handled by trained staff only.
Handling Advice:	Avoid repeat freeze-thaw cycles.
Storage:	-20 °C

Handling

Storage Comment: For short term use, store at 2-8°C up to 1 week. For long term storage, store at -20°C in small aliquots to prevent freeze-thaw cycles.

Images



Western Blotting

Image 1.