



[Go to Product page](#)

Datasheet for ABIN2785779

anti-GFRA2 antibody (C-Term)

3 Images

Overview

Quantity:	100 µL
Target:	GFRA2
Binding Specificity:	C-Term
Reactivity:	Human, Mouse, Rat, Horse, Pig, Dog, Cow, Guinea Pig, Rabbit
Host:	Rabbit
Clonality:	Polyclonal
Conjugate:	This GFRA2 antibody is un-conjugated
Application:	Western Blotting (WB)

Product Details

Immunogen:	The immunogen is a synthetic peptide directed towards the C terminal region of human GFRA2
Sequence:	NVSPKGPSFQ ATQAPRVEKT PSLPDDLSDS TSLGTSVITT CTSVQEQLK
Predicted Reactivity:	Cow: 93%, Dog: 100%, Guinea Pig: 93%, Horse: 100%, Human: 100%, Mouse: 100%, Pig: 100%, Rabbit: 100%, Rat: 100%
Characteristics:	This is a rabbit polyclonal antibody against GFRA2. It was validated on Western Blot using a cell lysate as a positive control.
Purification:	Affinity Purified

Target Details

Target:	GFRA2
---------	-------

Target Details

Alternative Name: GFRA2 ([GFRA2 Products](#))

Background: Glial cell line-derived neurotrophic factor (GDNF) and neurturin (NTN) are two structurally related, potent neurotrophic factors that play key roles in the control of neuron survival and differentiation. GFRA2 is a member of the GDNF receptor family. It is a glycosylphosphatidylinositol(GPI)-linked cell surface receptor for both GDNF and NTN, and mediates activation of the RET tyrosine kinase receptor. This encoded protein acts preferentially as a receptor for NTN compared to its other family member, GDNF family receptor alpha 1. Glial cell line-derived neurotrophic factor (GDNF) and neurturin (NTN) are two structurally related, potent neurotrophic factors that play key roles in the control of neuron survival and differentiation. The protein encoded by this gene is a member of the GDNF receptor family. It is a glycosylphosphatidylinositol(GPI)-linked cell surface receptor for both GDNF and NTN, and mediates activation of the RET tyrosine kinase receptor. This encoded protein acts preferentially as a receptor for NTN compared to its other family member, GDNF family receptor alpha 1. This gene is a candidate gene for RET-associated diseases. Publication Note: This RefSeq record includes a subset of the publications that are available for this gene. Please see the Entrez Gene record to access additional publications.

Alias Symbols: GDNFRB, NRTNR-ALPHA, NTNRA, RETL2, TRNR2

Protein Interaction Partner: PTEN, NRTN, GDNF,

Protein Size: 464

Molecular Weight: 47 kDa

Gene ID: 2675

NCBI Accession: [NM_001495](#), [NP_001486](#)

UniProt: [O00451](#)

Application Details

Application Notes: Optimal working dilutions should be determined experimentally by the investigator.

Comment: Antigen size: 464 AA

Restrictions: For Research Use only

Handling

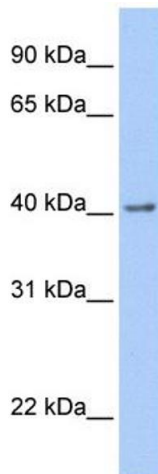
Format: Liquid

Concentration: Lot specific

Handling

Buffer:	Liquid. Purified antibody supplied in 1x PBS buffer with 0.09 % (w/v) sodium azide and 2 % sucrose.
Preservative:	Sodium azide
Precaution of Use:	This product contains Sodium azide: a POISONOUS AND HAZARDOUS SUBSTANCE which should be handled by trained staff only.
Handling Advice:	Avoid repeated freeze-thaw cycles.
Storage:	-20 °C
Storage Comment:	For short term use, store at 2-8°C up to 1 week. For long term storage, store at -20°C in small aliquots to prevent freeze-thaw cycles.

Images



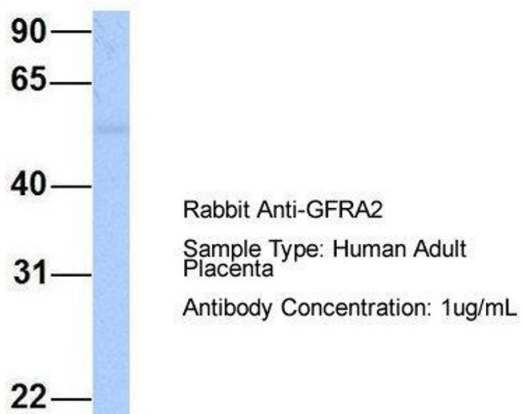
Western Blotting

Image 1. WB Suggested Anti-GFRA2 Antibody Titration:

0.2-1 ug/ml

Positive Control: Human brain

GFRA2



Western Blotting

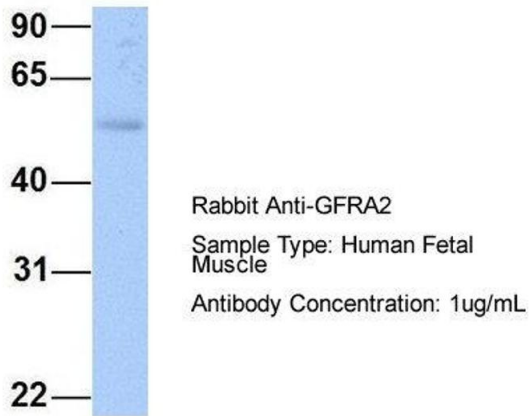
Image 2. Host: Rabbit

Target Name: GFRA2

Sample Tissue: Human Adult Placenta

Antibody Dilution: 1.0 µg/mL

GFRA2



Western Blotting

Image 3. Host: Rabbit

Target Name: GFRA2

Sample Tissue: Human Fetal Muscle

Antibody Dilution: 1.0 µg/mL