

Datasheet for ABIN2785780
anti-GCLC antibody (Middle Region)[Go to Product page](#)

3 Images

2 Publications

Overview

Quantity:	100 µL
Target:	GCLC
Binding Specificity:	Middle Region
Reactivity:	Human, Mouse, Rat, Cow, Zebrafish (Danio rerio), Rabbit, Dog, Guinea Pig, Horse, Saccharomyces cerevisiae
Host:	Rabbit
Clonality:	Polyclonal
Conjugate:	This GCLC antibody is un-conjugated
Application:	Western Blotting (WB), Immunohistochemistry (IHC)

Product Details

Immunogen:	The immunogen is a synthetic peptide directed towards the middle region of human GCLC
Sequence:	RISKSRYSI DSYLSKCGEK YNDIDLTIDK EIYEQLQEG IDHLLAQHVA
Predicted Reactivity:	Cow: 100%, Dog: 100%, Guinea Pig: 100%, Horse: 100%, Human: 100%, Mouse: 100%, Rabbit: 100%, Rat: 100%, Yeast: 100%, Zebrafish: 100%
Characteristics:	This is a rabbit polyclonal antibody against GCLC. It was validated on Western Blot.
Purification:	Affinity Purified

Target Details

Target:	GCLC
---------	------

Target Details

Alternative Name:	GCLC (GCLC Products)
Background:	<p>Glutamate-cysteine ligase, also known as gamma-glutamylcysteine synthetase is the first rate limiting enzyme of glutathione synthesis. The enzyme consists of two subunits, a heavy catalytic subunit and a light regulatory subunit. GCLC is the catalytic subunit of 637 amino acids with a calculated molecular weight of 72.773 kDa. Deficiency of gamma-glutamylcysteine synthetase in human is associated with enzymopathic hemolytic anemia.</p> <p>Alias Symbols: GCL, GCS, GLCL, GLCLC</p> <p>Protein Interaction Partner: UBC, PPID, GCLM, CCL22, PAXIP1, ELAVL1,</p> <p>Protein Size: 637</p>
Molecular Weight:	73 kDa
Gene ID:	2729
NCBI Accession:	NM_001498 , NP_001489
UniProt:	P48506
Pathways:	Cell RedoxHomeostasis

Application Details

Application Notes:	Optimal working dilutions should be determined experimentally by the investigator.
Comment:	Antigen size: 637 AA
Restrictions:	For Research Use only

Handling

Format:	Liquid
Concentration:	Lot specific
Buffer:	Liquid. Purified antibody supplied in 1x PBS buffer with 0.09 % (w/v) sodium azide and 2 % sucrose.
Preservative:	Sodium azide
Precaution of Use:	This product contains Sodium azide: a POISONOUS AND HAZARDOUS SUBSTANCE which should be handled by trained staff only.
Handling Advice:	Avoid repeated freeze-thaw cycles.
Storage:	-20 °C

Handling

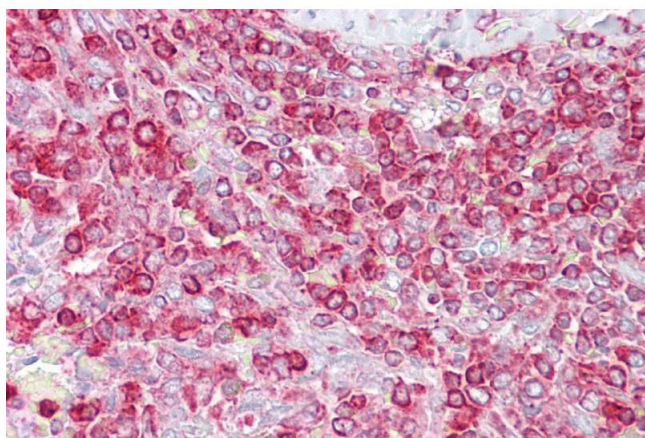
Storage Comment: For short term use, store at 2-8°C up to 1 week. For long term storage, store at -20°C in small aliquots to prevent freeze-thaw cycles.

Publications

Product cited in: Akter, Mansour, Hyodo, Senga: "FAM98A associates with DDX1-C14orf166-FAM98B in a novel complex involved in colorectal cancer progression." in: **The international journal of biochemistry & cell biology**, Vol. 84, pp. 1-13, (2017) ([PubMed](#)).

Akter, Mansour, Hyodo, Ito, Hamaguchi, Senga: "Erratum to: FAM98A is a novel substrate of PRMT1 required for tumor cell migration, invasion and colony formation." in: **Tumour biology**, Vol. 37, Issue 5, pp. 7001, (2016) ([PubMed](#)).

Images



Immunohistochemistry

Image 1. Immunohistochemistry with Spleen tissue at an antibody concentration of 5µg/ml using anti-GCLC antibody (ARP54577_P050)

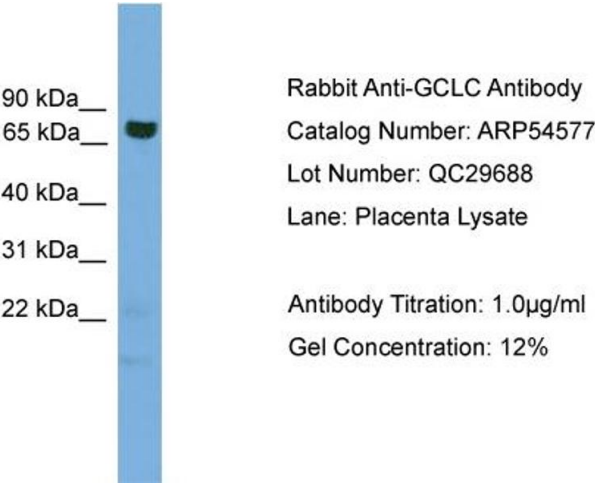


Western Blotting

Image 2. WB Suggested Anti-GCLC Antibody Titration:
0.2-1 ug/ml

ELISA Titer: 1:1562500

Positive Control: Human Placenta



Western Blotting

Image 3. WB Suggested Anti-GCLC

Antibody Titration: 0.2-1 µg/mL ELISA Titer: 1:1562500

Positive Control: Human Placenta