



[Go to Product page](#)

Datasheet for ABIN2785815
anti-GOLGA1 antibody (N-Term)

2 Images

Overview

Quantity:	100 µL
Target:	GOLGA1
Binding Specificity:	N-Term
Reactivity:	Human, Mouse, Rat, Zebrafish (Danio rerio), Horse, Rabbit, Cow, Guinea Pig, Dog
Host:	Rabbit
Clonality:	Polyclonal
Conjugate:	This GOLGA1 antibody is un-conjugated
Application:	Western Blotting (WB)

Product Details

Immunogen:	The immunogen is a synthetic peptide directed towards the N terminal region of human GOLGA1
Sequence:	RPGGATRIPR SVSKESVASM GADSGDDFAS DGSSSREDLS SQLLRNEQI
Predicted Reactivity:	Cow: 100%, Dog: 100%, Guinea Pig: 100%, Horse: 100%, Human: 100%, Mouse: 100%, Rabbit: 100%, Rat: 100%, Zebrafish: 100%
Characteristics:	This is a rabbit polyclonal antibody against GOLGA1. It was validated on Western Blot.
Purification:	Affinity Purified

Target Details

Target:	GOLGA1
---------	--------

Target Details

Alternative Name:	GOLGA1 (GOLGA1 Products)
Background:	<p>The Golgi apparatus, which participates in glycosylation and transport of proteins and lipids in the secretory pathway, consists of a series of stacked cisternae (flattened membrane sacs). Interactions between the Golgi and microtubules are thought to be important for the reorganization of the Golgi after it fragments during mitosis. This gene encodes one of the golgins, a family of proteins localized to the Golgi. This encoded protein is associated with Sjogren's syndrome.</p> <p>Alias Symbols: MGC33154, golgin-97</p> <p>Protein Interaction Partner: CEP57L1, PDCL2, TFIP11, VPS52, ATF4, gag-pol, ATXN10, ARL1, GOLGA1, RAB6A, SVIP,</p> <p>Protein Size: 767</p>
Molecular Weight:	88 kDa
Gene ID:	2800
NCBI Accession:	NM_002077 , NP_002068
UniProt:	Q92805

Application Details

Application Notes:	Optimal working dilutions should be determined experimentally by the investigator.
Comment:	Antigen size: 767 AA
Restrictions:	For Research Use only

Handling

Format:	Liquid
Concentration:	Lot specific
Buffer:	Liquid. Purified antibody supplied in 1x PBS buffer with 0.09 % (w/v) sodium azide and 2 % sucrose.
Preservative:	Sodium azide
Precaution of Use:	This product contains Sodium azide: a POISONOUS AND HAZARDOUS SUBSTANCE which should be handled by trained staff only.
Handling Advice:	Avoid repeated freeze-thaw cycles.

Handling

Storage: -20 °C

Storage Comment: For short term use, store at 2-8°C up to 1 week. For long term storage, store at -20°C in small aliquots to prevent freeze-thaw cycles.

Images



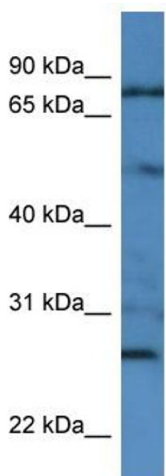
Western Blotting

Image 1. WB Suggested Anti-GOLGA1 Antibody Titration:

0.2-1 ug/ml

ELISA Titer: 1:62500

Positive Control: HCT15 cell lysate



Rabbit Anti-GOLGA1 Antibody
Catalog Number: ARP54639
Lot Number: QC30546
Lane: HCT15 Cell Lysate

Antibody Titration: 0.25µg/ml
Gel Concentration: 12%

Western Blotting

Image 2. WB Suggested Anti-GOLGA1

Antibody Titration: 0.2-1 µg/mL ELISA Titer: 1:2500

Positive Control: HCT15 cell lysate