

Datasheet for ABIN2785828

anti-RPSA/Laminin Receptor antibody (Middle Region)



[Go to Product page](#)

2 Images

Overview

Quantity:	100 µL
Target:	RPSA/Laminin Receptor (RPSA)
Binding Specificity:	Middle Region
Reactivity:	Human, Mouse, Rat, Cow, Sheep, Dog, Goat, Horse, Rabbit, Zebrafish (Danio rerio), Guinea Pig
Host:	Rabbit
Clonality:	Polyclonal
Conjugate:	This RPSA/Laminin Receptor antibody is un-conjugated
Application:	Western Blotting (WB), Immunohistochemistry (IHC)

Product Details

Immunogen:	The immunogen is a synthetic peptide directed towards the middle region of human RPSA
Sequence:	TFTNQIQAAF REPRLLVVD PRADHQLPTE ASYVNLPTIA LCNTDSPLRY
Predicted Reactivity:	Cow: 100%, Dog: 100%, Goat: 100%, Guinea Pig: 100%, Horse: 100%, Human: 100%, Mouse: 100%, Rabbit: 100%, Rat: 100%, Sheep: 100%, Zebrafish: 100%
Characteristics:	This is a rabbit polyclonal antibody against RPSA. It was validated on Western Blot using a cell lysate as a positive control.
Purification:	Affinity Purified

Target Details

Target:	RPSA/Laminin Receptor (RPSA)
---------	------------------------------

Target Details

Alternative Name:	RPSA (RPSA Products)
Background:	<p>RPSA is required for the assembly and/or stability of the 40S ribosomal subunit. RPSA is also required for the processing of the 20S rRNA-precursor to mature 18S rRNA in a late step of the maturation of 40S ribosomal subunits. Also functions as a cell surface receptor for laminin.</p> <p>RPSA plays a role in cell adhesion to the basement membrane and in the consequent activation of signaling transduction pathways. RPSA may play a role in cell fate determination and tissue morphogenesis. RPSA also acts as a receptor for several other ligands, including the pathogenic prion protein, viruses, and bacteria. Laminins, a family of extracellular matrix glycoproteins, are the major noncollagenous constituent of basement membranes. They have been implicated in a wide variety of biological processes including cell adhesion, differentiation, migration, signaling, neurite outgrowth and metastasis. Many of the effects of laminin are mediated through interactions with cell surface receptors. These receptors include members of the integrin family, as well as non-integrin laminin-binding proteins. This gene encodes a high-affinity, non-integrin family, laminin receptor 1. This receptor has been variously called 67 kD laminin receptor, 37 kD laminin receptor precursor (37LRP) and p40 ribosome-associated protein. The amino acid sequence of laminin receptor 1 is highly conserved through evolution, suggesting a key biological function. It has been observed that the level of the laminin receptor transcript is higher in colon carcinoma tissue and lung cancer cell line than their normal counterparts. Also, there is a correlation between the upregulation of this polypeptide in cancer cells and their invasive and metastatic phenotype. Multiple copies of this gene exist, however, most of them are pseudogenes thought to have arisen from retropositional events. Two alternatively spliced transcript variants encoding the same protein have been found for this gene.</p> <p>Alias Symbols: 37LRP, 67LR, LAMBR, LAMR1, LRP, p40, SA, LBP, lamR, LRP/LR, LBP/p40, NEM/1CHD4</p> <p>Protein Interaction Partner: UBC, SUMO2, MDM2, ZBTB1, RNF2, SUP35, rev, SYNCRIP, GNB2L1, DYNLL1, RPS28, RPS23, RPS21, RPS20, RPS18, RPS16, RPS13, RPS12, RPS9, RPS8, RPS5, RPS4X, RPS3A, RPS3, FAU, DYNC1LI2, PTBP1, PRUNE2, TSR1, XRCC6, HNRNPD, TARDBP, UBD, BAG3, PROS1, NKX3-1, ITGA4, I</p> <p>Protein Size: 295</p>
Molecular Weight:	33 kDa
Gene ID:	3921
NCBI Accession:	NM_002295 , NP_002286
UniProt:	P08865

Target Details

Pathways: [Ribonucleoprotein Complex Subunit Organization](#), [Ribosome Assembly](#)

Application Details

Application Notes: Optimal working dilutions should be determined experimentally by the investigator.

Comment: Antigen size: 295 AA

Restrictions: For Research Use only

Handling

Format: Liquid

Concentration: Lot specific

Buffer: Liquid. Purified antibody supplied in 1x PBS buffer with 0.09 % (w/v) sodium azide and 2 % sucrose.

Preservative: Sodium azide

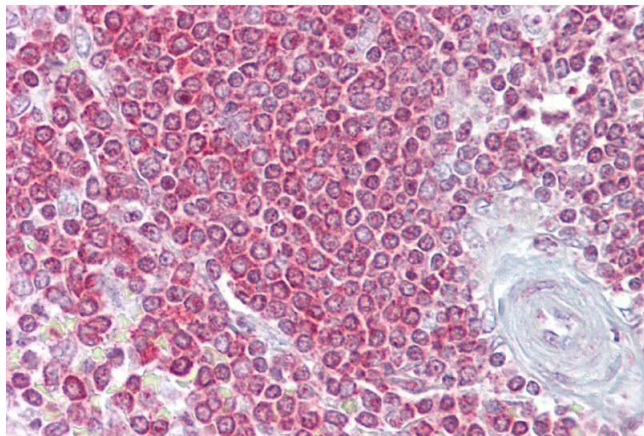
Precaution of Use: This product contains Sodium azide: a POISONOUS AND HAZARDOUS SUBSTANCE which should be handled by trained staff only.

Handling Advice: Avoid repeated freeze-thaw cycles.

Storage: -20 °C

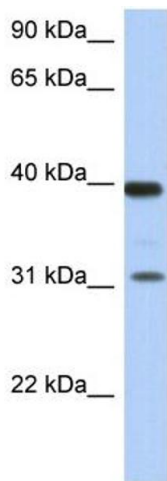
Storage Comment: For short term use, store at 2-8°C up to 1 week. For long term storage, store at -20°C in small aliquots to prevent freeze-thaw cycles.

Images



Immunohistochemistry

Image 1. Immunohistochemistry with Spleen tissue at an antibody concentration of 5µg/ml using anti-RPSA antibody (ARP54683_P050)



Western Blotting

Image 2. WB Suggested Anti-RPSA Antibody Titration:

0.2-1 ug/ml

ELISA Titer: 1:312500

Positive Control: Human Thymus