

Datasheet for ABIN2785836  
**anti-LUM antibody (Middle Region)**



[Go to Product page](#)

2 Images

## Overview

Quantity:	100 µL
Target:	LUM
Binding Specificity:	Middle Region
Reactivity:	Human, Mouse, Rat, Dog, Horse, Cow, Guinea Pig, Rabbit, Pig
Host:	Rabbit
Clonality:	Polyclonal
Conjugate:	This LUM antibody is un-conjugated
Application:	Western Blotting (WB)

## Product Details

Immunogen:	The immunogen is a synthetic peptide directed towards the middle region of human LUM
Sequence:	AFKGLKSLEY LDLSFNQIAR LPSGLPVSLL TLYLDNNKIS NIPDEYFKRF
Predicted Reactivity:	Cow: 100%, Dog: 100%, Guinea Pig: 79%, Horse: 100%, Human: 100%, Mouse: 100%, Pig: 93%, Rabbit: 93%, Rat: 86%
Characteristics:	This is a rabbit polyclonal antibody against LUM. It was validated on Western Blot.
Purification:	Affinity Purified

## Target Details

Target:	LUM
Alternative Name:	LUM ( <a href="#">LUM Products</a> )

## Target Details

Background:	<p>This gene encodes a member of the small leucine-rich proteoglycan (SLRP) family that includes decorin, biglycan, fibromodulin, keratocan, epiphykan, and osteoglycin. In these bifunctional molecules, the protein moiety binds collagen fibrils and the highly charged hydrophilic glycosaminoglycans regulate interfibrillar spacings. Lumican is the major keratan sulfate proteoglycan of the cornea but is also distributed in interstitial collagenous matrices throughout the body. Lumican may regulate collagen fibril organization and circumferential growth, corneal transparency, and epithelial cell migration and tissue repair.</p> <p>Alias Symbols: LDC, SLRR2D</p> <p>Protein Interaction Partner: GNAQ, TRA2B, MMP14, ACAN, COL1A2,</p> <p>Protein Size: 338</p>
Molecular Weight:	37 kDa
Gene ID:	4060
NCBI Accession:	<a href="#">NM_002345</a> , <a href="#">NP_002336</a>
UniProt:	<a href="#">P51884</a>
Pathways:	<a href="#">Glycosaminoglycan Metabolic Process</a>

## Application Details

Application Notes:	Optimal working dilutions should be determined experimentally by the investigator.
Comment:	Antigen size: 338 AA
Restrictions:	For Research Use only

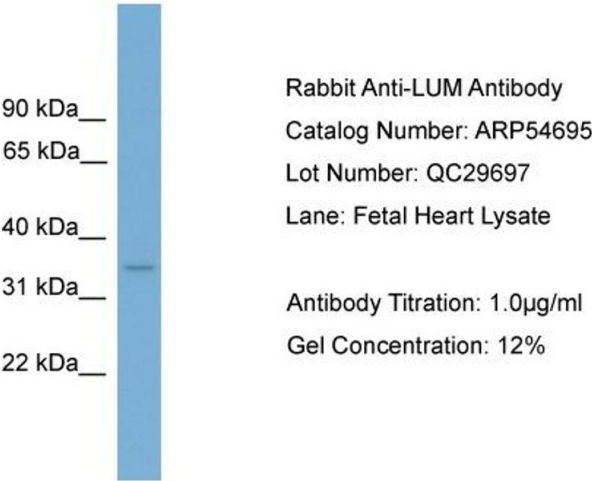
## Handling

Format:	Liquid
Concentration:	Lot specific
Buffer:	Liquid. Purified antibody supplied in 1x PBS buffer with 0.09 % (w/v) sodium azide and 2 % sucrose.
Preservative:	Sodium azide
Precaution of Use:	This product contains Sodium azide: a POISONOUS AND HAZARDOUS SUBSTANCE which should be handled by trained staff only.
Handling Advice:	Avoid repeated freeze-thaw cycles.

Handling

Storage:	-20 °C
Storage Comment:	For short term use, store at 2-8°C up to 1 week. For long term storage, store at -20°C in small aliquots to prevent freeze-thaw cycles.

Images

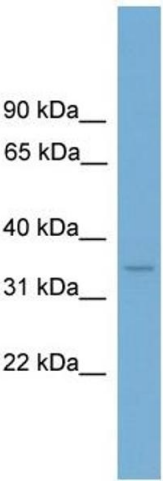


Western Blotting

**Image 1.** WB Suggested Anti-LUM

Antibody Titration: 0.2-1 µg/mL ELISA Titer: 1:1562500

Positive Control: Human heart



Western Blotting

**Image 2.** WB Suggested Anti-LUM Antibody Titration: 0.2-1 ug/ml

**ELISA Titer:** 1:1562500

**Positive Control:** Human heart