

Datasheet for ABIN2785852
anti-EPS8 antibody (Middle Region)[Go to Product page](#)

2 Images

Overview

Quantity:	100 µL
Target:	EPS8
Binding Specificity:	Middle Region
Reactivity:	Human, Rat, Mouse, Pig, Dog, Rabbit, Horse, Cow
Host:	Rabbit
Clonality:	Polyclonal
Conjugate:	This EPS8 antibody is un-conjugated
Application:	Western Blotting (WB), Immunohistochemistry (IHC)

Product Details

Immunogen:	The immunogen is a synthetic peptide directed towards the middle region of human EPS8
Sequence:	VSKVPANITR QNSSSSDSGG SIVRDSQRHK QLPVDRRKSQ MEEVQDELIH
Predicted Reactivity:	Cow: 100%, Dog: 93%, Horse: 93%, Human: 100%, Mouse: 100%, Pig: 100%, Rabbit: 93%, Rat: 93%
Characteristics:	This is a rabbit polyclonal antibody against EPS8. It was validated on Western Blot using a cell lysate as a positive control.
Purification:	Affinity Purified

Target Details

Target:	EPS8
---------	------

Target Details

Alternative Name:	EPS8 (EPS8 Products)
Background:	<p>This gene encodes a member of the EPS8 family. This protein contains one PH domain and one SH3 domain. It functions as part of the EGFR pathway, though its exact role has not been determined. Highly similar proteins in other organisms are involved in the</p> <p>Alias Symbols: -</p> <p>Protein Interaction Partner: GRB2, RUNX1T1, BYSL, GOLGA8EP, C19orf25, C17orf59, INPP5J, BAIAP2, SMARCE1, HNRNPC, SUMO2, BAIAP2L1, ANKRD28, EPS8, SOX2, TPRN, PROSER2, NACC2, SCRIN3, ARMC1, ADAM22, TDP2, GULP1, CTNNA3, ZZZ3, SF3B3, SLC27A4, BCKDK, RFXAP, NFKB2, MAP3K11, CXCL2, XRCC6, CS</p> <p>Protein Size: 822</p>
Molecular Weight:	92 kDa
Gene ID:	2059
NCBI Accession:	NM_004447 , NP_004438
UniProt:	Q12929
Pathways:	EGFR Signaling Pathway , Regulation of Actin Filament Polymerization

Application Details

Application Notes:	Optimal working dilutions should be determined experimentally by the investigator.
Comment:	Antigen size: 822 AA
Restrictions:	For Research Use only

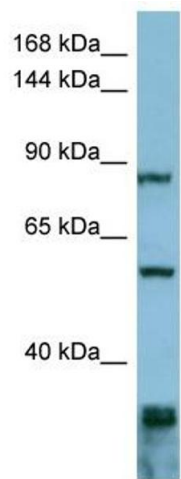
Handling

Format:	Liquid
Concentration:	Lot specific
Buffer:	Liquid. Purified antibody supplied in 1x PBS buffer with 0.09 % (w/v) sodium azide and 2 % sucrose.
Preservative:	Sodium azide
Precaution of Use:	This product contains Sodium azide: a POISONOUS AND HAZARDOUS SUBSTANCE which should be handled by trained staff only.
Handling Advice:	Avoid repeated freeze-thaw cycles.

Handling

Storage:	-20 °C
Storage Comment:	For short term use, store at 2-8°C up to 1 week. For long term storage, store at -20°C in small aliquots to prevent freeze-thaw cycles.

Images

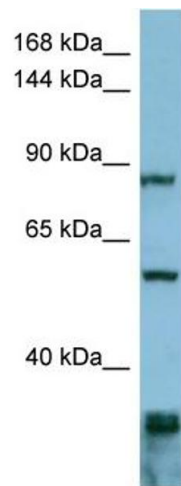


Western Blotting

Image 1. WB Suggested Anti-EPS8 Antibody Titration: 0.2-1 ug/ml

ELISA Titer: 1:62500

Positive Control: ACHN cell lysate



Western Blotting

Image 2. WB Suggested Anti-EPS8

Antibody Titration: 0.2-1 µg/mL ELISA Titer: 1:2500

Positive Control: ACHN cell lysate

EPS8 is supported by BioGPS gene expression data to be expressed in ACHN