

Datasheet for ABIN2785855
anti-FRG1 antibody (Middle Region)[Go to Product page](#)

2 Images

Overview

Quantity:	100 µL
Target:	FRG1
Binding Specificity:	Middle Region
Reactivity:	Human, Mouse, Rat, Cow, Dog, Horse, Goat, Guinea Pig, Rabbit, Zebrafish (Danio rerio)
Host:	Rabbit
Clonality:	Polyclonal
Application:	Western Blotting (WB)

Product Details

Immunogen:	The immunogen is a synthetic peptide corresponding to a region of Mouse
Sequence:	GINS DGLVVG RSDAIGPREQ WEPVFQDGKM ALLASNSCFI RCNEAGDIEA
Predicted Reactivity:	Cow: 100%, Dog: 100%, Goat: 100%, Guinea Pig: 100%, Horse: 100%, Human: 100%, Mouse: 100%, Rabbit: 100%, Rat: 100%, Zebrafish: 86%
Characteristics:	This is a rabbit polyclonal antibody against Frg1. It was validated on Western Blot.
Purification:	Affinity Purified

Target Details

Target:	FRG1
Alternative Name:	Frg1 (FRG1 Products)
Background:	Frg1 may have a role in processing of pre-rRNA or in the assembly of rRNA into ribosomal

Target Details

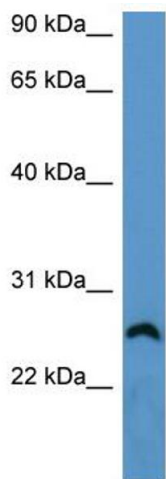
	subunits and also may be involved in pre-mRNA splicing Alias Symbols: - Protein Interaction Partner: Eed, Pou5f1, Protein Size: 258
Molecular Weight:	28 kDa
Gene ID:	14300
NCBI Accession:	NM_013522 , NP_038550
UniProt:	P97376

Application Details

Application Notes:	Optimal working dilutions should be determined experimentally by the investigator.
Comment:	Antigen size: 258 AA
Restrictions:	For Research Use only

Handling

Format:	Liquid
Concentration:	Lot specific
Buffer:	Liquid. Purified antibody supplied in 1x PBS buffer with 0.09 % (w/v) sodium azide and 2 % sucrose.
Preservative:	Sodium azide
Precaution of Use:	This product contains Sodium azide: a POISONOUS AND HAZARDOUS SUBSTANCE which should be handled by trained staff only.
Handling Advice:	Avoid repeated freeze-thaw cycles.
Storage:	-20 °C
Storage Comment:	For short term use, store at 2-8°C up to 1 week. For long term storage, store at -20°C in small aliquots to prevent freeze-thaw cycles.

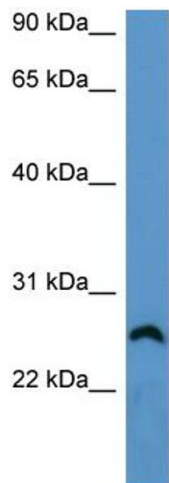


Western Blotting

Image 1. WB Suggested Anti-Frg1 Antibody Titration: 0.2-1 ug/ml

ELISA Titer: 1:62500

Positive Control: Mouse Brain



Rabbit Anti-Frg1 Antibody
Catalog Number: ARP54731
Lot Number: QC23645
Lane: Mouse Brain Lysate

Antibody Titration: 1.0µg/ml
Gel Concentration: 12%

Western Blotting

Image 2. WB Suggested Anti-Frg1

Antibody Titration: 0.2-1 µg/mL ELISA Titer: 1::2500

Positive Control: Mouse Brain