

Datasheet for ABIN2785864  
**anti-PPM1J antibody (C-Term)**[Go to Product page](#)

## 1 Image

## Overview

Quantity:	100 µL
Target:	PPM1J
Binding Specificity:	C-Term
Reactivity:	Human, Mouse, Rat, Cow, Dog, Guinea Pig, Horse, Rabbit, Zebrafish (Danio rerio)
Host:	Rabbit
Clonality:	Polyclonal
Conjugate:	This PPM1J antibody is un-conjugated
Application:	Western Blotting (WB)

## Product Details

Immunogen:	The immunogen is a synthetic peptide directed towards the C terminal region of human PPM1J
Sequence:	YTAQAQALVL GARGTPRDRG WRLPNNKLGS GDDISVFVIP LGGPGRSYS
Predicted Reactivity:	Cow: 100%, Dog: 100%, Guinea Pig: 100%, Horse: 100%, Human: 100%, Mouse: 100%, Rabbit: 100%, Rat: 100%, Zebrafish: 85%
Characteristics:	This is a rabbit polyclonal antibody against PPM1J. It was validated on Western Blot using a cell lysate as a positive control.
Purification:	Affinity Purified

## Target Details

Target:	PPM1J
---------	-------

## Target Details

Alternative Name:	PPM1J ( <a href="#">PPM1J Products</a> )
Background:	<p>PPM1J is the serine/threonine protein phosphatase. The mouse homolog of this protein apparently belongs to the protein phosphatase 2C family. The exact function of this protein is not yet known. This gene encodes the serine/threonine protein phosphatase. The mouse homolog of this gene apparently belongs to the protein phosphatase 2C family of genes. The exact function of this gene is not yet known.</p> <p>Alias Symbols: DKFZp434P1514, FLJ35951, MGC19531, MGC90149, PP2CZ, PP2Czeta, PPP2CZ, RP11-426L16.5</p> <p>Protein Interaction Partner: UBE2I, SUMO1, CSN1S1,</p> <p>Protein Size: 505</p>
Molecular Weight:	55 kDa
Gene ID:	333926
NCBI Accession:	<a href="#">NM_005167</a> , <a href="#">NP_005158</a>
UniProt:	<a href="#">Q5JR12</a>

## Application Details

Application Notes:	Optimal working dilutions should be determined experimentally by the investigator.
Comment:	Antigen size: 505 AA
Restrictions:	For Research Use only

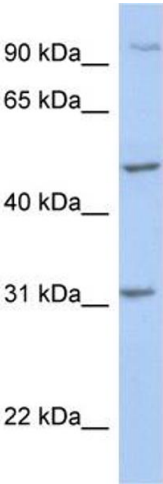
## Handling

Format:	Liquid
Concentration:	Lot specific
Buffer:	Liquid. Purified antibody supplied in 1x PBS buffer with 0.09 % (w/v) sodium azide and 2 % sucrose.
Preservative:	Sodium azide
Precaution of Use:	This product contains Sodium azide: a POISONOUS AND HAZARDOUS SUBSTANCE which should be handled by trained staff only.
Handling Advice:	Avoid repeated freeze-thaw cycles.
Storage:	-20 °C

Handling

Storage Comment: For short term use, store at 2-8°C up to 1 week. For long term storage, store at -20°C in small aliquots to prevent freeze-thaw cycles.

Images



Western Blotting

**Image 1.** WB Suggested Anti-PPM1J Antibody Titration: 0.2-1 ug/ml ELISA Titer: 1:312500 Positive Control: 721\_B cell lysate