

Datasheet for ABIN2785866
anti-GRK5 antibody (Middle Region)



[Go to Product page](#)

1 Image

Overview

Quantity:	100 µL
Target:	GRK5
Binding Specificity:	Middle Region
Reactivity:	Human, Mouse, Rat, Cow, Dog, Horse, Guinea Pig, Zebrafish (Danio rerio), Rabbit, Saccharomyces cerevisiae
Host:	Rabbit
Clonality:	Polyclonal
Conjugate:	This GRK5 antibody is un-conjugated
Application:	Western Blotting (WB), Immunohistochemistry (IHC)

Product Details

Immunogen:	The immunogen is a synthetic peptide directed towards the middle region of human GRK5
Sequence:	FYAAEILCGL EDLHRENTVY RDLKPENILL DDYGHIRISD LGLAVKIPEG
Predicted Reactivity:	Cow: 86%, Dog: 100%, Guinea Pig: 100%, Horse: 93%, Human: 100%, Mouse: 100%, Rabbit: 86%, Rat: 100%, Yeast: 79%, Zebrafish: 86%
Characteristics:	This is a rabbit polyclonal antibody against GRK5. It was validated on Western Blot using a cell lysate as a positive control.
Purification:	Affinity Purified

Target Details

Target:	GRK5
---------	------

Target Details

Alternative Name:	GRK5 (GRK5 Products)
Background:	<p>GRK5 is a member of the guanine nucleotide-binding protein (G protein)-coupled receptor kinase subfamily of the Ser/Thr protein kinase family. The protein phosphorylates the activated forms of G protein-coupled receptors thus initiating their deactivation. It has also been shown to play a role in regulating the motility of polymorphonuclear leukocytes (PMNs). This gene encodes a member of the guanine nucleotide-binding protein (G protein)-coupled receptor kinase subfamily of the Ser/Thr protein kinase family. The protein phosphorylates the activated forms of G protein-coupled receptors thus initiating their deactivation. It has also been shown to play a role in regulating the motility of polymorphonuclear leukocytes (PMNs). Publication Note: This RefSeq record includes a subset of the publications that are available for this gene. Please see the Entrez Gene record to access additional publications.</p> <p>Alias Symbols: GPRK5</p> <p>Protein Interaction Partner: TBXA2R, USP47, C1QBP, YWHAB, XRCC5, UBTF, UBC, TUFM, NR2F1, TCOF1, SRPK1, SPTBN1, SPTAN1, SMARCA1, SKP1, SRSF1, RPL4, RPL3, RBMS1, PSMD11, PSMD2, PSMC6, PSMC2, PSMC1, PRKDC, PPP2R2A, PNN, PIP4K2A, PIP, NFIB, NCL, NCBP1, MYO9B, MYO1C, MYH10, MYH9, MYCN, MA</p> <p>Protein Size: 590</p>
Molecular Weight:	68 kDa
Gene ID:	2869
NCBI Accession:	NM_005308 , NP_005299
UniProt:	P34947
Pathways:	Myometrial Relaxation and Contraction , Regulation of G-Protein Coupled Receptor Protein Signaling

Application Details

Application Notes:	Optimal working dilutions should be determined experimentally by the investigator.
Comment:	Antigen size: 590 AA
Restrictions:	For Research Use only

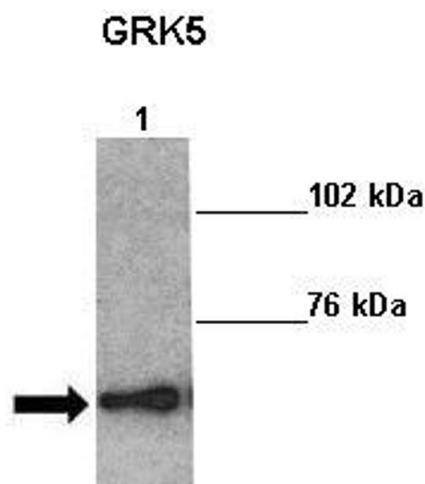
Handling

Format:	Liquid
Concentration:	Lot specific

Handling

Buffer:	Liquid. Purified antibody supplied in 1x PBS buffer with 0.09 % (w/v) sodium azide and 2 % sucrose.
Preservative:	Sodium azide
Precaution of Use:	This product contains Sodium azide: a POISONOUS AND HAZARDOUS SUBSTANCE which should be handled by trained staff only.
Handling Advice:	Avoid repeated freeze-thaw cycles.
Storage:	-20 °C
Storage Comment:	For short term use, store at 2-8°C up to 1 week. For long term storage, store at -20°C in small aliquots to prevent freeze-thaw cycles.

Images



Western Blotting

Image 1. Sample Type: Lane 1:241 µg mouse left ventricle heart lysate

Primary Antibody Dilution: 1:0000

Secondary Antibody: Anti-rabbit-HRP

Secondary Antibody Dilution: 1:0000 Color/Signal

Descriptions: GRK5

Gene Name: Kathleen Gabrielson

Submitted by: