



[Go to Product page](#)

Datasheet for ABIN2785868
anti-GRF2 antibody (C-Term)

3 Images

Overview

Quantity:	100 µL
Target:	GRF2 (RAPGEF1)
Binding Specificity:	C-Term
Reactivity:	Human, Mouse, Rat, Dog, Cow, Guinea Pig, Horse, Zebrafish (Danio rerio)
Host:	Rabbit
Clonality:	Polyclonal
Conjugate:	This GRF2 antibody is un-conjugated
Application:	Western Blotting (WB)

Product Details

Immunogen:	The immunogen is a synthetic peptide directed towards the C terminal region of human RAPGEF1
Sequence:	LWAKEQNEEK SPNLTQFTEH FNNMSYWVRS IIMLQEKAQD RERLLLKFIK
Predicted Reactivity:	Cow: 100%, Dog: 100%, Guinea Pig: 100%, Horse: 100%, Human: 100%, Mouse: 100%, Rat: 100%, Zebrafish: 100%
Characteristics:	This is a rabbit polyclonal antibody against RAPGEF1. It was validated on Western Blot using a cell lysate as a positive control.
Purification:	Affinity Purified

Target Details

Target:	GRF2 (RAPGEF1)
---------	----------------

Target Details

Alternative Name:	RAPGEF1 (RAPGEF1 Products)
Background:	<p>RAPGEF1 is a human guanine nucleotide exchange factor. It transduces signals from CRK by binding the SH3 domain of CRK, and activating several members of the Ras family of GTPases. This signaling cascade protein may be involved in apoptosis, integrin-mediated signal transduction, and cell transformation. This gene encodes a human guanine nucleotide exchange factor. It transduces signals from CRK by binding the SH3 domain of CRK, and activating several members of the Ras family of GTPases. This signaling cascade that may be involved in apoptosis, integrin-mediated signal transduction, and cell transformation. Several alternatively spliced transcript variants of this gene have been described, but the full-length nature of some variants has not been determined.</p> <p>Alias Symbols: C3G, DKFZp781P1719, GRF2</p> <p>Protein Interaction Partner: UBC, MBIP, SLC20A1, ATXN1, RPS15, CRKL, CRK, CBL, GRB2, NEDD9, RHOQ, BCAR1, SHC1, RRAS2, HRAS, RAP1B, HCK, RAP1A,</p> <p>Protein Size: 1077</p>
Molecular Weight:	120 kDa
Gene ID:	2889
NCBI Accession:	NM_005312 , NP_005303
UniProt:	Q13905
Pathways:	Interferon-gamma Pathway , Neurotrophin Signaling Pathway , Platelet-derived growth Factor Receptor Signaling , Signaling of Hepatocyte Growth Factor Receptor

Application Details

Application Notes:	Optimal working dilutions should be determined experimentally by the investigator.
Comment:	Antigen size: 1077 AA
Restrictions:	For Research Use only

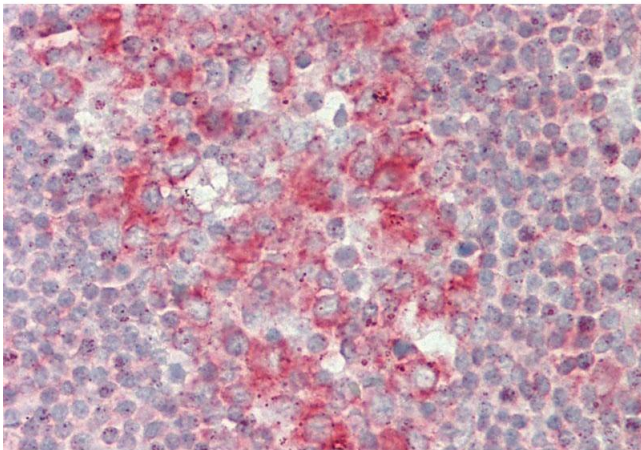
Handling

Format:	Liquid
Concentration:	Lot specific
Buffer:	Liquid. Purified antibody supplied in 1x PBS buffer with 0.09 % (w/v) sodium azide and 2 % sucrose.

Handling

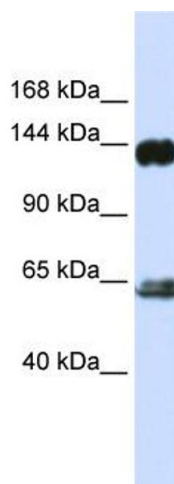
Preservative:	Sodium azide
Precaution of Use:	This product contains Sodium azide: a POISONOUS AND HAZARDOUS SUBSTANCE which should be handled by trained staff only.
Handling Advice:	Avoid repeated freeze-thaw cycles.
Storage:	-20 °C
Storage Comment:	For short term use, store at 2-8°C up to 1 week. For long term storage, store at -20°C in small aliquots to prevent freeze-thaw cycles.

Images



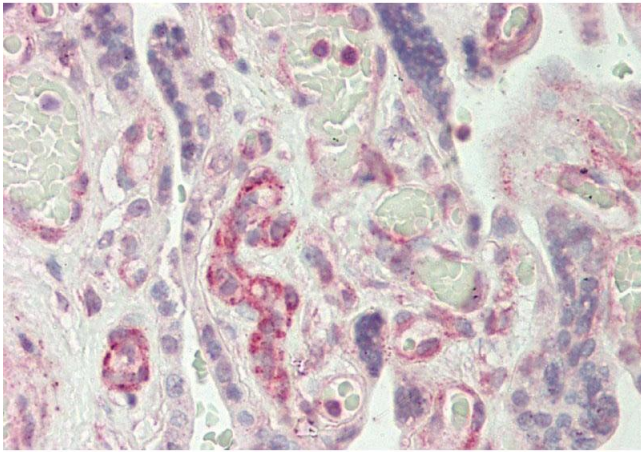
Immunohistochemistry

Image 1. Rabbit Anti-RAPGEF1 antibody Catalog Number: ARP54753 Formalin Fixed Paraffin Embedded Tissue: Human Tonsil Primary antibody Concentration: 1:100 Secondary Antibody: Donkey anti-Rabbit-Cy3 Secondary Antibody Concentration: 1:200 Magnification: 20x Exposure Time: 0.5-2.0sec



Western Blotting

Image 2. WB Suggested Anti-RAPGEF1 Antibody Titration: 0.2-1 ug/ml ELISA Titer: 1:312500 Positive Control: Human brain



Immunohistochemistry

Image 3. Rabbit Anti-RAPGEF1 antibody Catalog Number: ARP54753 Formalin Fixed Paraffin Embedded Tissue: Human Placenta Primary antibody Concentration: 1:100 Secondary Antibody: Donkey anti-Rabbit-Cy3 Secondary Antibody Concentration: 1:200 Magnification: 20x Exposure Time: 0.5-2.0sec