

Datasheet for ABIN2785875  
**anti-INPP5B antibody (Middle Region)**



[Go to Product page](#)

1 Image

1 Publication

### Overview

Quantity:	100 µL
Target:	INPP5B
Binding Specificity:	Middle Region
Reactivity:	Human, Mouse, Rat, Dog, Rabbit, Horse, Guinea Pig
Host:	Rabbit
Clonality:	Polyclonal
Conjugate:	This INPP5B antibody is un-conjugated
Application:	Western Blotting (WB)

### Product Details

Immunogen:	The immunogen is a synthetic peptide directed towards the middle region of human INPP5B
Sequence:	IHNGQVPCHF EFINKPDEES YCKQWLNANP SRGFLLPDSD VEIDLELFVN
Predicted Reactivity:	Dog: 85%, Guinea Pig: 92%, Horse: 92%, Human: 100%, Mouse: 92%, Rabbit: 77%, Rat: 92%
Characteristics:	This is a rabbit polyclonal antibody against INPP5B. It was validated on Western Blot using a cell lysate as a positive control.
Purification:	Affinity Purified

### Target Details

Target:	INPP5B
Alternative Name:	INPP5B ( <a href="#">INPP5B Products</a> )

## Target Details

---

**Background:** Cellular calcium signaling is controlled by the production of inositol phosphates (IPs) by phospholipase C in response to extracellular signals. The IP signaling molecules are inactivated by a family of inositol polyphosphate-5-phosphatases (5-phosphatases). INPP5B is the type II 5-phosphatase. The protein is localized to the cytosol and mitochondria, and associates with membranes through an isoprenyl modification near the C-terminus. Cellular calcium signaling is controlled by the production of inositol phosphates (IPs) by phospholipase C in response to extracellular signals. The IP signaling molecules are inactivated by a family of inositol polyphosphate-5-phosphatases (5-phosphatases). This gene encodes the type II 5-phosphatase. The protein is localized to the cytosol and mitochondria, and associates with membranes through an isoprenyl modification near the C-terminus. Several alternatively spliced transcript variants of this gene have been described, but the full-length nature of some of these variants has not been determined.

Alias Symbols: 5PTase, MGC65156, MGC71303

Protein Interaction Partner: UBC, APP, SMURF1,

Protein Size: 913

---

**Molecular Weight:** 77 kDa

---

**Gene ID:** 3633

---

**NCBI Accession:** [NM\\_005540](#), [NP\\_005531](#)

---

**UniProt:** [P32019](#)

## Application Details

---

**Application Notes:** Optimal working dilutions should be determined experimentally by the investigator.

---

**Comment:** Antigen size: 913 AA

---

**Restrictions:** For Research Use only

## Handling

---

**Format:** Liquid

---

**Concentration:** Lot specific

---

**Buffer:** Liquid. Purified antibody supplied in 1x PBS buffer with 0.09 % (w/v) sodium azide and 2 % sucrose.

---

**Preservative:** Sodium azide

---

## Handling

---

Precaution of Use:	This product contains Sodium azide: a POISONOUS AND HAZARDOUS SUBSTANCE which should be handled by trained staff only.
Handling Advice:	Avoid repeated freeze-thaw cycles.
Storage:	-20 °C
Storage Comment:	For short term use, store at 2-8°C up to 1 week. For long term storage, store at -20°C in small aliquots to prevent freeze-thaw cycles.

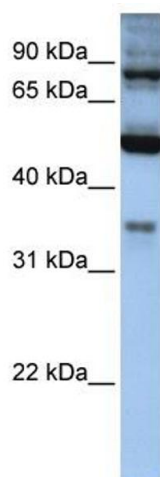
## Publications

---

Product cited in:	Akter, Mansour, Hyodo, Senga: "FAM98A associates with DDX1-C14orf166-FAM98B in a novel complex involved in colorectal cancer progression." in: <b>The international journal of biochemistry &amp; cell biology</b> , Vol. 84, pp. 1-13, (2017) ( <a href="#">PubMed</a> ).
	Akter, Mansour, Hyodo, Ito, Hamaguchi, Senga: "Erratum to: FAM98A is a novel substrate of PRMT1 required for tumor cell migration, invasion and colony formation." in: <b>Tumour biology</b> , Vol. 37, Issue 5, pp. 7001, (2016) ( <a href="#">PubMed</a> ).

## Images

---



### Western Blotting

**Image 1.** WB Suggested Anti-INPP5B Antibody Titration: 0.2-1 ug/ml ELISA Titer: 1:1562500 Positive Control: HeLa cell lysate